

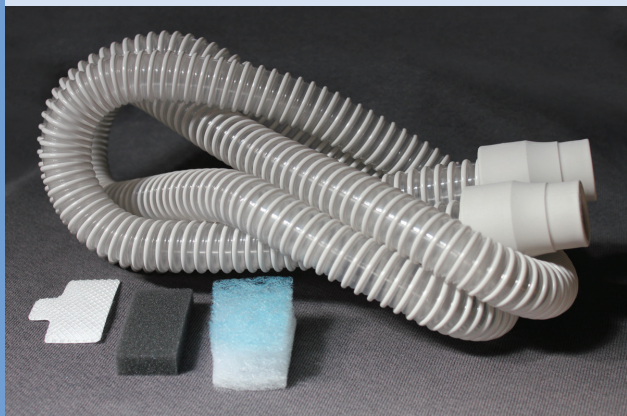


Homecare  
Product Catalog

# CONTENT

## CPAP Page

Masks and Replacement Parts	4-6
Sunset Healthcare Solutions	4-5
Bleep	6
Tubing	7
Chinstraps	8-9
Headgear	9
Filters	10-18
Respironics	10-11
ResMed	12-13
Fisher & Paykel	14
3B	15
AEIOMed	15
Breas/GE	15
CareFusion/Viasys	16
Covidien Nellcor Puritan Bennett	16
DeVilbiss	17
Evo Medical	17
Healthdyne	18
Invacare	18
ProBasics	18
Cash Items	19-23
Mask Liners	19
Tubing Wraps	19
Pillows	20
Accessories, Connectors, and Adapters	20-21
Cleaners	22-23



## Oxygen Page

Firesafe	24
Masks	25
Pulse Oximeters	25
Cannula	26-27
Tubing	28
Regulators and Conserver	28
Cylinder Carriers	30-31
Connectors and Adapters	32
Accessories and Cleaners	33-34
Bacteria and HEPA Filters	35
Concentrator Cabinet Filters	36-41
Caire/AirSep/Sequal	36
CHAD	36
Covidien Nellcor Puritan Bennett	36
DeVilbiss/Drive	37
Inogen	38
Invacare	38
Nidek	39
Respironics/Healthdyne	40-41



## Other Page

Aerosol	42-43
Nebulizers, Kits, and Filters	44-45
Suction	46-47
Tracheostomy	48-49
Ventilator Supplies	50
Anesthesia Filters	50
Wheelchair Cushions	51





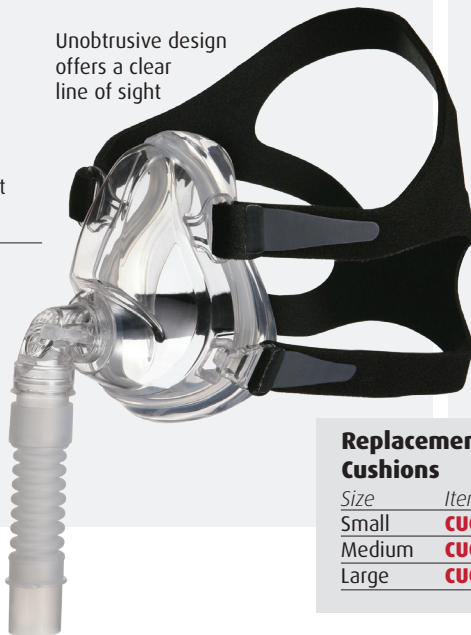
# SUNSET HEALTHCARE SOLUTIONS

## Sunset Deluxe Full Face CPAP Masks

### Mask with Flex Tube, Headgear, and Replaceable Cushion

Size	Item#
Small	<b>CM005S</b>
Medium	<b>CM005M</b>
Large	<b>CM005L</b>

Unobtrusive design offers a clear line of sight



**HG003** Headgear - Fits Most  
**HG003XL** Headgear - XL

**CMSIZE01**  
Deluxe Sizing Guide

HCPCS#  
MASK - A7030  
HEADGEAR - A7035  
CUSHION - A7031

### Mask without Headgear

Size	Item#
Small	<b>CM005SNH</b>
Medium	<b>CM005MNH</b>
Large	<b>CM005LNH</b>

### Replacement Cushions

Size	Item#
Small	<b>CUCM005S</b>
Medium	<b>CUCM005M</b>
Large	<b>CUCM005L</b>

### Mask with Adjustable Forehead T, Headgear, and Replaceable Cushion

Size	Item#
Small	<b>CM105S</b>
Medium	<b>CM105M</b>
Large	<b>CM105L</b>

**NEW**



- 360° dual-swivel elbow port allows for free movement while connected to the tubing
- Quick-release clips make it easy to remove the mask without resetting the headgear
- Ultra-lightweight silicone replaceable cushion increases comfort while maintaining optimal seal

## Sunset Deluxe Nasal CPAP Masks

### Mask with Headgear and Replaceable Cushion

Size	Item#
Small	<b>CM006S</b>
Medium	<b>CM006M</b>
Large	<b>CM006L</b>

Same features as the full face with 360° dual-swivel elbow port, quick release clips, and ultra-lightweight replaceable cushions.



**HG003** Headgear - Fits Most  
**HG003XL** Headgear - XL

**CMSIZE01**  
Deluxe Sizing Guide

HCPCS#  
MASK - A7034  
HEADGEAR - A7035  
CUSHION - A7032

### Mask without Headgear

Size	Item#
Small	<b>CM006SNH</b>
Medium	<b>CM006MNH</b>
Large	<b>CM006LNH</b>

### Replacement Cushions

Size	Item#
Small	<b>CUCM006S</b>
Medium	<b>CUCM006M</b>
Large	<b>CUCM006L</b>

### Mask with Headgear, Adjustable Forehead T, and Replaceable Cushion

Size	Item#
Small	<b>CM106S</b>
Medium	<b>CM106M</b>
Large	<b>CM106L</b>

**NEW**



# SUNSET HEALTHCARE SOLUTIONS

## Sunset Deluxe Nasal Pillow CPAP Mask

Item#

**CM036**

Mask with Headgear and Small, Medium, and Large Pillows

**HG036**

Headgear Only

HCPCS#

MASK - A7034

HEADGEAR - A7035

PILLOWS - A7033



### Replacement Pillows

Size Item#

Small **CM036SP**

Medium **CM036MP**

Large **CM036LP**



### Mask without Headgear

**CM036NH**

- Easy to fit, assemble, and maintain
- Three different pillow sizes to fit more people more easily
- 360° rotational elbow with flexible silicone tube
- Quiet vent design

## Sunset Clearsight Deluxe Nasal Mask

### Mask with Headgear and Replaceable Cushion

Size Item#

Small **CM110S**

Medium **CM110M**

Large **CM110L**



**HG003** Headgear - Fits Most

**HG003XL** Headgear - XL

### Replacement Cushions

Size Item#

Small **CUCM110S**

Medium **CUCM110M**

Large **CUCM110L**

HCPCS#

MASK - A7034

HEADGEAR - A7035



- Clearsight design provides unobstructed view

Mask Series	Mask Type	Replaceable Cushion	Forehead Support	Flex Tube Included	Headgear Included
<b>CM005</b>	Full Face	✓		✓	✓
<b>CM105</b>	Full Face	✓	✓ (Adjustable)		✓
<b>CM006</b>	Nasal	✓	✓	✓	✓
<b>CM106</b>	Nasal	✓	✓ (Adjustable)		✓
<b>CM007</b>	Full Face	✓			✓
<b>CM008</b>	Nasal	✓			✓
<b>CM110</b>	Nasal	✓			✓
<b>CM036</b>	Nasal Pillow	✓		✓	✓

## Sunset Classic Full Face CPAP Mask



### Mask with Headgear

Size Item#

Small **CM007S**

Medium **CM007M**

Large **CM007L**

Extra Large **CM007XL**

**HG003** Headgear - Fits Most

**HG003XL** Headgear - XL

**CMSIZE02**  
Classic Sizing Guide

HCPCS#

MASK - A7030

HEADGEAR - A7035

**1/2 THE WEIGHT OF LEADING MASKS**

- Conventional forehead pad removed to create a clear line of sight
- Minimalist design and ultra-lightweight silicone
- Quick-release clips make it easy to remove
- 360° dual-swivel elbow port allows for free movement
- One-piece mask and cushion design is durable and easy

## Sunset Classic Nasal CPAP Mask



### Mask with Headgear

Size Item#

Medium **CM008M**

Large **CM008L**

**HG003** Headgear - Fits Most

**HG003XL** Headgear - XL

**CMSIZE02**  
Classic Sizing Guide

HCPCS#

MASK - A7034

HEADGEAR - A7035

- Great value for cash patients or those with lower insurance reimbursement
- Headgear clips allow for quick removal of mask — no further adjustments required after initial fitting
- One-piece mask and cushion design is durable and easy



## DreamPort Sleep Solution

Item#

**CMB100381**

- Bleep DreamWay Interface with 10-inch hose and connector
- Bleep DreamPorts (32-Pack, 16-Night Supply)
- Instruction Guide

**CUB100379**

Bleep DreamPorts  
32 Count (16 Nights)



**CAPB100433**

Bleep DreamPreps  
100 Pads



Unlike traditional CPAP masks, the DreamPort Sleep Solution from Bleep is headgear free, lightweight, flexible and easy to use. The patented solution uses medical grade adhesive strips to hold the DreamPorts (seals) in place eliminating headgear. And unlike traditional seals, with the DreamPorts you will not wake up with marks on your face.



HCPCS#

MASK - A7034

PILLOWS - A7033





# SUNSET HCS TUBING

## Durable CPAP Tubing — Gray



Item#  
**TUB06**  
6ft with 22mm Cuffs

HCPCS# A7037

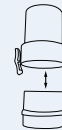
- Sunset's most popular item
- Compatible with nearly all CPAP, BiPAP and BiLevel systems for every manufacturer on the market
- Smooth interior and a corrugated exterior for excellent flexibility and unrestricted interior flow characteristics
- Injection molded cuffs to reduce tearing
- Low memory to avoid kinks
- BPA-free and latex-free

### All Lengths with 22mm Cuffs

<b>TUB0018</b>	18in
<b>TUB002</b>	2ft
<b>TUB004</b>	4ft
<b>TUB06</b>	6ft
<b>TUB006.5</b>	6ft 6in — Compatible with ResMed tube wraps
<b>TUB007</b>	7ft
<b>TUB008</b>	8ft
<b>TUB009</b>	9ft
<b>TUB010</b>	10ft

Partner with our new quick release connector for ease of use

Item#  
**CAP1016**



## Slim CPAP Tube

Item#  
**TUB006SS**  
6ft x 15mm with 22mm cuffs  
HCPCS# A7037



### Highly durable

Strain relief cuff decreases separation and tearing

### Virtually no memory

Designed to be the most flexible tube available

### Minimal weight

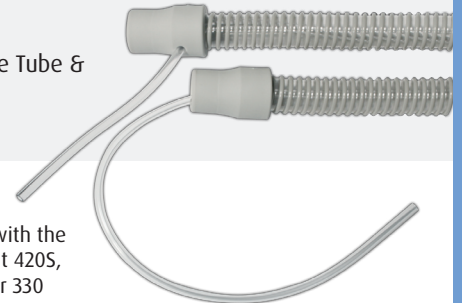
One of the lightest tubes on the market at 2.6 ounces

### Great value

Affordable and sustainable

## Pressure Port Tubing

Item#  
**TUB006PP**  
Gray 6ft with Pressure Line Tube & 22mm Cuffs  
HCPCS# A7037



- Built-in sensor line for use with the Puritan Bennett: GoodKnight 420S, 420E and 425 and KnightStar 330

# SUNSET CHINSTRAPS

All chinstraps are latex-free • Hand wash only • Lay flat to dry

## Universal Neoprene Chinstrap



Item# **CS001**  
 Universal Chinstrap  
 HCPCS# A7036

- One size fits most
- Attaches to itself at the top of the head
- Can be used with any nasal mask or pillows

## Basic Chinstrap



Item# **CS002**  
 Compare to  
 Resipronics Basic  
 OEM# 302175  
 HCPCS# A7036

- One size fits most
- Attaches to the top strap of headgear
- Cups the chin for comfort
- Works best with any nasal mask

## Adjustable Neoprene Chinstrap



Size	Item#
6in	<b>CS003S</b>
7in	<b>CS003R</b>
8in	<b>CS003M</b>
9in	<b>CS003L</b>
10in	<b>CS003XL</b>

Compare to Puresom  
 Adjustable Ruby  
 OEM# TMS-09 ADJ  
 HCPCS# A7036

- Thin adjustable strap attaches at the top of the head. Thicker bottom strap attaches to itself at the back of the head.
- Great for hard-to-fit patients

For fitting, measure along one side of the head, as indicated by the dashed line above.

## Deluxe Chinstrap



Size	Item#
26in	<b>CS004S</b>
28in	<b>CS004L</b>

Compare to  
 Resipronics Deluxe  
 OEM# 302425  
 HCPCS# A7036

- Attaches to itself at the top of the head, two smaller support straps keep the system in place
- Extra-wide strap distributes pressure to add comfort

## Comfort Chinstrap



Item# **CS005**  
 Compare to  
 ResMed Sullivan  
 OEM# 16015  
 HCPCS# A7036

- One size fits most
- Easy to use — Attaches to itself at the top of the head
- Soft cloth chin cup adds comfort

## Premium Chinstrap



Item# **CS006**  
 Compare to  
 Resipronics Premium  
 OEM# 1012911  
 HCPCS# A7036

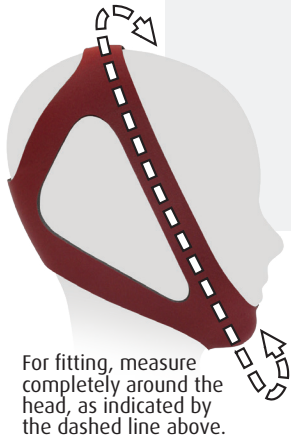
- One size fits most
- Attaches to itself at the top of the head to keep the chin lifted. Smaller support strap attaches to a split section of the chinstrap and wraps around the head for added stability.



# SUNSET CHINSTRAPS AND HEADGEAR

All chinstraps and headgear are latex-free • Hand wash only • Lay flat to dry

## Ruby Style Chinstrap



For fitting, measure completely around the head, as indicated by the dashed line above.

Size	Item#
24-28in	<b>CS007S</b>
29-31in	<b>CS007M</b>
32-36in	<b>CS007L</b>

Compare to Puresom Ruby  
OEM# TMS-09 • HCPCS# A7036

- One piece stretches to slide over the top of the head — no need to Velcro
- Can be used with any nasal mask or pillows

## Halo Style Chinstrap



Item# **CS025**  
Compare to BreatheWear Halo Chinstrap  
OEM# H3407  
HCPCS# A7036

## Ruby Style Adjustable Chinstrap



Size	Item#
Regular	<b>CS007-ADJ</b>
Extra Large	<b>CS007-ADJXL</b>

HCPCS# A7036

- Fully adjustable
- Super soft materials for extra comfort

**NEW**  
**IMPROVED**



## Universal Mesh Headgear



Item# **HG001**  
Compare to Respironics SimpleStrap Headgear  
OEM# 302328  
HCPCS# A7035

- One size fits most
- Can be used with most 4-point nasal or full face masks

## Universal Headgear



Size	Length	Item#
Regular	22.5in	<b>HG003</b>
Extra Large	24.5in	<b>HG003XL</b>

HCPCS# A7035

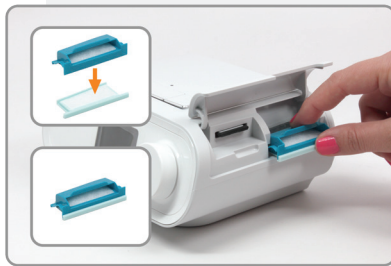
- Can be used with most 4-point nasal or full face masks

## DreamStation



Item# **CF1010**  
 Disposable Filter  
**6/pack**  
 OEM# 1122519  
 HCPCS# A7038  
**CF1010-1** 1/pack  
**CF1010-2** 2/pack

Item# **CF1010F**  
 Reusable Filter  
**2/pack**  
 OEM# 112446 (1-pack)  
 HCPCS# A7039  
**CF1010F-1** 1/pack  
**CF1010F-6** 6/pack



## DreamStation Go Filters



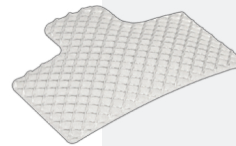
Item# **CF101130D**  
 30-Day Disposable Filter  
**6/pack**  
 OEM# 1133744  
 HCPCS# A7038

Item# **CF101190D**  
 90-Day Reusable Filter  
**2/pack**  
 OEM# 1133743  
 HCPCS# A7039

## PR System One



Item# **CF1009NT**  
 Ultrafine Filter - No Tab  
**6/pack** • 1<sup>3/4</sup>" x 7/8"  
 OEM# 1029331  
 HCPCS# A7038  
**CF1009NT-1** 1/pack  
**CF1009NT-2** 2/pack



Item# **CF1009**  
 Ultrafine Filter - Tabbed  
**6/pack** • 1<sup>3/4</sup>" x 7/8"  
 HCPCS# A7038  
**CF1009-1** 1/pack  
**CF1009-2** 2/pack



Item# **CF1009F**  
 Foam Filter  
**2/pack** • 1<sup>5/8</sup>" x 7/8"  
 OEM# 1029330  
 HCPCS# A7039  
**CF1009F-1** 1/pack

## M-Series

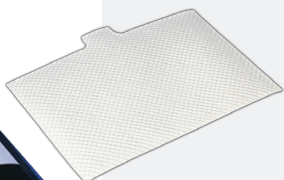


Item# **CF1007**  
 Ultrafine Filter - Tabbed  
**6/pack** • 1<sup>3/4</sup>" x 7/8"  
 HCPCS# A7038  
**CF1007-1** 1/pack  
**CF1007-2** 2/pack

Item# **CF1007F**  
 Foam Filter  
**2/pack** • 1<sup>5/8</sup>" x 7/8"  
 HCPCS# A7039  
**CF1007F-1** 1/pack

# RESPIRONICS

## BiPAP Pro, Plus, Duet LX, Synchrony

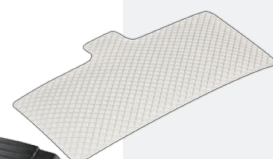


**Item# CF1005**  
Ultrafine Filter  
**6/pack** • 4<sup>3/4</sup>" x 3<sup>1/4</sup>"  
OEM# 622219  
HCPCS# A7038



**Item# CF1005F**  
Foam Filter  
**2/pack** • 4<sup>3/4</sup>" x 2<sup>3/8</sup>"  
OEM# 622220  
HCPCS# A7039

## REMstar Pro, REMstar Plus



**Item# CF1006**  
Ultrafine Filter  
**2/pack** • 3<sup>1/2</sup>" x 1<sup>1/2</sup>"  
OEM# 1005945  
HCPCS# A7038

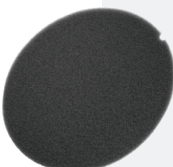


**Item# CF1006F**  
Foam Filter  
**2/pack** • 3<sup>5/8</sup>" x 1<sup>5/8</sup>"  
OEM# 1005964  
HCPCS# A7039

## REMstar



**Item# CF1003**  
Ultrafine Filter  
**6/pack** • 5<sup>1/2</sup>" x 4<sup>3/4</sup>"  
OEM# 362522  
HCPCS# A7038



**Item# CF1003F**  
Foam Filter  
**1/pack** • 5<sup>3/4</sup>" x 5<sup>1/4</sup>"  
OEM# 362521  
HCPCS# A7039

## Aria, Virtuoso, Duet, Quartet



**Item# CF1004**  
Ultrafine Filter  
**6/pack** • 3<sup>1/2</sup>" x 2<sup>3/16</sup>"  
OEM# 532311  
HCPCS# A7038



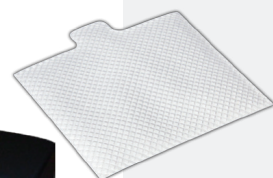
**Item# CF1004F**  
Foam Filter  
**2/pack** • 3<sup>1/4</sup>" x 2<sup>1/8</sup>"  
OEM# 532247  
HCPCS# A7039

## SleepEasy/BiPAP

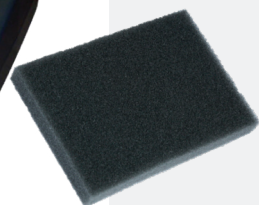


**Item# CF1001**  
Ultrafine Filter  
**6/pack** • 7<sup>3/4</sup>" x 4<sup>7/8</sup>"  
OEM# 302064  
HCPCS# A7038

## Solo, Aria LX, Virtuoso LX, REMstar LX



**Item# CF1002**  
Ultrafine Filter  
**6/pack** • 3<sup>3/8</sup>" x 2<sup>3/4</sup>"  
OEM# 622017  
HCPCS# A7038



**Item# CF1002F**  
Foam Filter  
**2/pack** • 3<sup>5/16</sup>" x 2<sup>5/16</sup>"  
OEM# 622018  
HCPCS# A7039

## Filter Replacement for Respironics Machines

**Step 1** Insert the white ultrafine filter with the webbed plastic or shiny side facing in toward the machine. This filter protects the patient from bacteria and allergens in the air.

**Step 2** Place black foam filter in second to protect the machine from large particles and pollen.



*All filters can be ordered in any pack quantity.  
Contact your sales rep for details.*

## AirMini



Item# **CF2108**  
 Disposable Filter  
**2/pack** • 1<sup>1</sup>/<sub>4</sub>" x 1<sup>3</sup>/<sub>16</sub>"  
 OEM# 38815  
 HCPCS# A7038

## S9 and AirSense 10 Series



Item# **CF2107**  
 Disposable Filter  
**3/pack** • 2<sup>1</sup>/<sub>8</sub>" x 1<sup>3</sup>/<sub>8</sub>"  
 HCPCS# A7038

**CF2107-1** 1/pack OEM# 36850  
**CF2107-2** 2/pack OEM# 36851  
**CF2107-50** 50/pack OEM# 36853

## Adapt SV



Item# **CF2106**  
 Disposable Filter  
**3/pack** • 1<sup>1</sup>/<sub>4</sub>" x 1<sup>1</sup>/<sub>2</sub>"  
 OEM# 26926  
 HCPCS# A7038

**CF2106-50** 50/pack

Item# **CF2106HA**  
 Hypoallergenic Filter  
**3/pack** • 1<sup>1</sup>/<sub>4</sub>" x 1<sup>1</sup>/<sub>2</sub>"  
 OEM# 26927  
 HCPCS# A7038

**CF2106HA-50** 50/pack



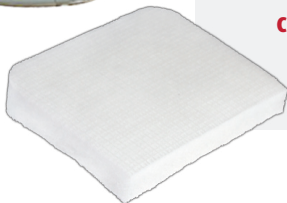
Item# **TUB06S9COMBO**  
 S9 Filter and CPAP Tube Kit  
 6 - CF2107  
 1 - 6ft CPAP Tube

**KIT**

Item# **CF2107HA**  
 Hypoallergenic Filter  
**3/pack** • 2<sup>1</sup>/<sub>8</sub>" x 1<sup>3</sup>/<sub>8</sub>"  
 HCPCS# A7038

**CF2107HA-1** 1/pack OEM# 36855  
**CF2107HA-2** 2/pack OEM# 36856  
**CF2107HA-50** 50/pack  
 OEM# 36858

## Auto Set T



Item# **CF2104**  
 Disposable Filter  
**3/pack** • 4<sup>1</sup>/<sub>4</sub>" x 3<sup>1</sup>/<sub>4</sub>"  
 OEM# 17937  
 HCPCS# A7038

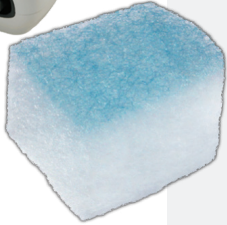
**CF2104-50** 50/pack OEM# 17938

## Filter Replacement for ResMed Machines

- Step 1** Open air filter hatch on back of machine.
- Step 2** Remove old filter and discard. Filters are not washable/reusable.
- Step 3** Place filter with blue side facing out. For S9 and AirSense 10 filters, both sides are the same.
- Step 4** Close air filter hatch.



## S8 Series



Item#  
**CF2105**  
Disposable Filter  
**3/pack** • 1<sup>3</sup>/<sub>8</sub>" x 1<sup>3</sup>/<sub>8</sub>"  
OEM# 33916  
HCPCS# A7038

**CF2105-1** 1/pack OEM# 33915  
**CF2105-2** 2/pack OEM# 33973  
**CF2105-50** 50/pack OEM# 33918



**KIT**

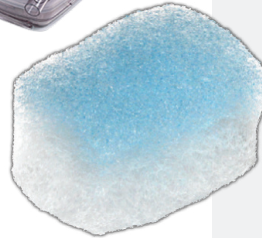
Item#  
**TUB06S8COMBO**  
S8 Filter and CPAP Tube Kit  
6 - CF2105  
1 - 6ft CPAP Tube



Item#  
**CF2105HA**  
Hypoallergenic Filter  
**3/pack** • 1<sup>3</sup>/<sub>8</sub>" x 1<sup>3</sup>/<sub>8</sub>"  
OEM# 33920  
HCPCS# A7038

**CF2105HA-1** 1/pack OEM# 33919  
**CF2105HA-2** 2/pack OEM# 33975  
**CF2105HA-50** 50/pack OEM# 33922

## S7 Series



Item#  
**CF2103**  
Disposable Filter  
**3/pack** • 1<sup>1</sup>/<sub>4</sub>" x 1<sup>1</sup>/<sub>2</sub>"  
OEM# 30907  
HCPCS# A7038

**CF2103-1** 1/pack OEM# 30919  
**CF2103-2** 2/pack  
**CF2103-50** 50/pack OEM# 30908



Item#  
**CF2103HA**  
Hypoallergenic Filter  
**3/pack** • 1<sup>1</sup>/<sub>4</sub>" x 1<sup>1</sup>/<sub>2</sub>"  
HCPCS# A7038

**CF2103HA-1** 1/pack OEM# 30933  
**CF2103HA-50** 50/pack

*All filters can be ordered  
in any pack quantity.  
Contact your sales rep  
for details.*

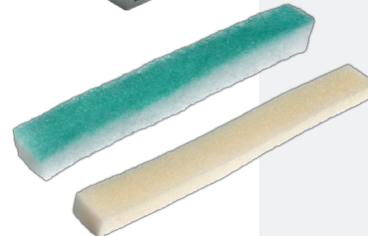
## S6 Series



Item#  
**CF2102**  
Disposable Filter  
**3/pack** • 5<sup>3</sup>/<sub>4</sub>" x 5<sup>5</sup>/<sub>8</sub>"  
OEM# 21935  
HCPCS# A7038

**CF2102-50** 50/pack  
OEM# 21936

## Sullivan VPAP



Item#  
**CF2101**  
Foam and Poly Filter Set  
**3 sets/pack** • 6<sup>1</sup>/<sub>2</sub>" x 3<sup>3</sup>/<sub>4</sub>"  
OEM# 14907  
HCPCS# A7038, A7039

**CF2101-50** 50 sets/pack  
OEM# 14908

# FISHER & PAYKEL

## ICON Series



Item#  
**CF4003**  
Disposable Filter  
**4/pack**  
2 1/16" x 5/8"  
HCPCS# A7038

**CF4003-1** 1/pack  
OEM# 900ICON503

**CF4003-2** 2/pack

**CF4003-6** 6/pack  
OEM# 900ICON212

## HC230 Series, HC600 Series



Item#  
**CF4002**  
Disposable Filter  
**4/pack** • 2 3/4" x 7/8"  
OEM# 900HC240  
HCPCS# A7038  
**CF4002-2** 2/pack

## HC200, HC220, HC221



Item#  
**CF4001**  
Disposable Filter  
**4/pack** • 5" x 3/4"  
OEM# 900HC222  
HCPCS# A7038  
**CF4001-2** 2/pack



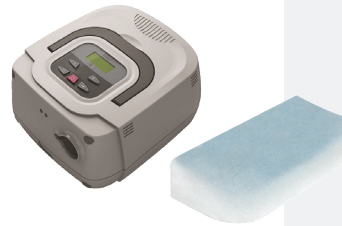
# 3B

## Luna and Luna II



Item# **CF8005**  
Disposable Filter  
**12/pack** • 2" x 1<sup>3</sup>/<sub>16</sub>"  
HCPCS# A7038

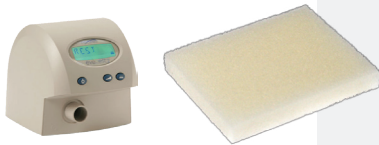
## RESmart



Item# **CF8004**  
Disposable Filter  
**3/pack** • 3<sup>5</sup>/<sub>16</sub>" x 1<sup>5</sup>/<sub>8</sub>"  
HCPCS# A7038

# AEIOMED

## Everest Aura, Everest III and Integrated



Item# **CF8001**  
Foam Filter  
**2/pack** • 2" x 1<sup>9</sup>/<sub>16</sub>"  
OEM# 100446  
HCPCS# A7039

# BREAS/GE

## iSleep 20 Series



Item# **CF7003**  
Ultrafine Filter  
**2/pack** • 2<sup>1</sup>/<sub>4</sub>" x 7<sup>8</sup>/<sub>8</sub>"  
OEM# 004153  
HCPCS# A7038

Item# **CF7003F**  
Foam Filter  
**Each** • 2<sup>3</sup>/<sub>4</sub>" x 1"  
OEM# 004154  
HCPCS# A7039

## PV10



Item# **CF7002**  
Ultrafine Filter  
**2/pack** • 2<sup>3</sup>/<sub>4</sub>" x 7<sup>8</sup>/<sub>8</sub>"  
OEM# 2B01975  
HCPCS# A7038

Item# **CF7002F**  
Foam Filter  
**Each** • 2<sup>5</sup>/<sub>8</sub>" x 7<sup>8</sup>/<sub>8</sub>"  
OEM# 2B01972  
HCPCS# A7039

## PV1



Item# **CF7001**  
Ultrafine Filter  
**2/pack** • 2<sup>1</sup>/<sub>2</sub>" x 1<sup>1</sup>/<sub>4</sub>"  
HCPCS# A7038

Item# **CF7001F**  
Foam Filter  
**3/pack** • 2<sup>1</sup>/<sub>2</sub>" x 1<sup>1</sup>/<sub>4</sub>"  
HCPCS# A7039

# CAREFUSION/VIASYS

## PureSom



Item#  
**CF9003**  
Ultrafine Filter  
**3/pack** • 1<sup>3</sup>/<sub>16</sub>" x 1<sup>7</sup>/<sub>16</sub>"  
OEM# 7511  
HCPCS# A7038

Item#  
**CF9003F**  
Foam Filter  
**3/pack** • 1<sup>3</sup>/<sub>16</sub>" x 1<sup>7</sup>/<sub>16</sub>"  
OEM# 7510  
HCPCS# A7039

## Orion and Pegasus



Item#  
**CF8002**  
Ultrafine Filter  
**6/pack** • 2<sup>7</sup>/<sub>8</sub>" x 1<sup>3</sup>/<sub>4</sub>"  
OEM# 774688  
HCPCS# A7038

Item#  
**CF8002F**  
Foam Filter  
**Each** • 2<sup>7</sup>/<sub>8</sub>" x 1<sup>3</sup>/<sub>4</sub>"  
OEM# 774689  
HCPCS# A7039

# COVIDIEN NELLCOR PURITAN BENNETT

## GoodKnight 314/318



Item#  
**CF6005**  
Ultrafine Filter  
**2/pack** • 6<sup>1</sup>/<sub>8</sub>" x 9<sup>9</sup>/<sub>16</sub>"  
OEM# S-126924-00  
HCPCS# A7038

Item#  
**CF6005F**  
Foam Filter  
**2/pack** • 6<sup>1</sup>/<sub>4</sub>" x 1"  
OEM# S-290609-00  
HCPCS# A7039

## GoodKnight 420/425



Item#  
**CF6003**  
Ultrafine Filter  
**2/pack** • 1<sup>3</sup>/<sub>16</sub>" x 3<sup>1</sup>/<sub>16</sub>"  
OEM# M-413950-04  
HCPCS# A7038

Item#  
**CF6003F**  
Foam Filter  
**Each** • 1<sup>3</sup>/<sub>16</sub>" x 3<sup>3</sup>/<sub>16</sub>"  
OEM# M-413950-02  
HCPCS# A7039

## GoodKnight 418 A/G/P/S



Item#  
**CF6002**  
Ultrafine Filter  
**4/pack** • 5<sup>3</sup>/<sub>16</sub>" x 3<sup>3</sup>/<sub>4</sub>"  
OEM# Y-413560-01  
HCPCS# A7038

Item#  
**CF6002F**  
Foam Filter  
**6/pack** • 5<sup>1</sup>/<sub>4</sub>" x 3<sup>3</sup>/<sub>4</sub>"  
OEM# Y-413560-02  
HCPCS# A7039

## GoodKnight 418



Item#  
**CF6001**  
Ultrafine Filter  
**4/pack** • 2<sup>1</sup>/<sub>4</sub>" x 1<sup>2</sup>/<sub>5</sub>"  
OEM# S-645030-00  
HCPCS# A7038

Item#  
**CF6001F**  
Foam Filter  
**6/pack** • 2<sup>7</sup>/<sub>16</sub>" x 1<sup>1</sup>/<sub>2</sub>"  
OEM# S-645029-00  
HCPCS# A7039

# DEVILBISS

## IntelliPAP



Item#  
**CF5004**  
Ultrafine Filter  
**4/pack** • 1<sup>3</sup>/<sub>4</sub>" x 1<sup>1</sup>/<sub>4</sub>"  
OEM# DV51D-603  
HCPCS# A7038

Item#  
**CF5004F**  
Foam Filter  
**4/pack** • 1<sup>5</sup>/<sub>8</sub>" x 1<sup>3</sup>/<sub>16</sub>"  
OEM# DV51D-602  
HCPCS# A7039

## Horizon LT



Item#  
**CF5003**  
Ultrafine Filter  
**4/pack** • 4<sup>1</sup>/<sub>4</sub>" x 1<sup>5</sup>/<sub>16</sub>"  
OEM# 8000D-603  
HCPCS# A7038

Item#  
**CF5003F**  
Foam Filter  
**4/pack** • 4<sup>1</sup>/<sub>4</sub>" x 1<sup>5</sup>/<sub>16</sub>"  
OEM# 8000D-602  
HCPCS# A7039

# EVO MEDICAL

## RemRest



Item#  
**CF8003F**  
Foam Filter  
**3/pack** • 2<sup>3</sup>/<sub>16</sub>" x 1<sup>1</sup>/<sub>16</sub>"  
OEM# 21117  
HCPCS# A7039

## Comfort PAP



Item#  
**CF9003**  
Ultrafine Filter  
**3/pack** • 1<sup>3</sup>/<sub>16</sub>" x 1<sup>7</sup>/<sub>16</sub>"  
OEM# 7511  
HCPCS# A7038

Item#  
**CF9003F**  
Foam Filter  
**3/pack** • 1<sup>3</sup>/<sub>8</sub>" x 1<sup>1</sup>/<sub>4</sub>"  
OEM# 7510  
HCPCS# A7039

*All filters can be ordered in any pack quantity.  
Contact your sales rep for details.*

# HEALTHDYNE

## Quest



Item# **CF3003**  
Ultrafine Filter  
with Curves  
**5/pack** • 4<sup>1</sup>/<sub>2</sub>" x 4<sup>3</sup>/<sub>8</sub>"  
OEM# 7302  
HCPCS# A7038

Item# **CF3003F**  
Foam Filter  
with Curves  
**5/pack** • 4<sup>1</sup>/<sub>2</sub>" x 4<sup>1</sup>/<sub>4</sub>"  
OEM# 7070  
HCPCS# A7039

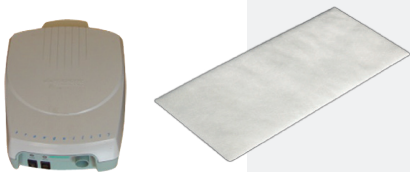
## Tranquility MPR



Item# **CF3002**  
Ultrafine Filter  
Rectangle/Curve  
**5/pack** • 4<sup>5</sup>/<sub>16</sub>" x 1<sup>7</sup>/<sub>8</sub>"  
OEM# 7270  
HCPCS# A7038

Item# **CF3002F**  
Foam Filter  
**5/pack**  
5" x 2<sup>1</sup>/<sub>4</sub>" x 2<sup>1</sup>/<sub>8</sub>"  
OEM# 7301  
HCPCS# A7039

## Tranquility



Item# **CF3001**  
Ultrafine Filter  
**5/pack** • 5<sup>1</sup>/<sub>8</sub>" x 1<sup>7</sup>/<sub>8</sub>"  
OEM# 7170  
HCPCS# A7038

# INVACARE

## Polaris LT



Item# **CF9002**  
Ultrafine Filter  
**3/pack** • 5" x 2"  
OEM# 1082428  
HCPCS# A7038

Item# **CF9002F**  
Foam Filter  
**3/pack** • 5" x 2"  
OEM# 1082995  
HCPCS# A7039

## Polaris EX



Item# **CF9001**  
Ultrafine Filter  
**3/pack** • 2<sup>3</sup>/<sub>16</sub>" x 1"  
HCPCS# A7038

Item# **CF9001F**  
Foam Filter  
**3/pack** • 2<sup>1</sup>/<sub>4</sub>" x 1<sup>1</sup>/<sub>16</sub>"  
OEM# 1124211  
HCPCS# A7039

## Polaris TR



Item# **CF8001**  
Foam Filter  
**2/pack** • 2" x 1<sup>9</sup>/<sub>16</sub>"  
OEM# 100446  
HCPCS# A7039

# PROBASICS

## Zzz-PAP



Item# **CF9003**  
Ultrafine Filter  
**3/pack** • 1<sup>3</sup>/<sub>16</sub>" x 1<sup>7</sup>/<sub>16</sub>"  
OEM# 7511  
HCPCS# A7038

Item# **CF9003F**  
Foam Filter  
**3/pack** • 1<sup>3</sup>/<sub>16</sub>" x 1<sup>7</sup>/<sub>16</sub>"  
OEM# 7510  
HCPCS# A7039

*All filters can be ordered  
in any pack quantity.  
Contact your sales rep  
for details.*

# CASH ITEMS

## Comfort Tubing Wrap



Item#  
**CAP2001**  
6ft Velour  
Tubing Wrap  
**Each**  
Compare to  
Respironics  
Tubing Wrap

- 6ft plush velour material adds comfort while preventing rainout
- Zipper closure for ease of use



## Deluxe Tubing Wrap



Item#  
**CAP2002**  
6ft Nylon  
Tubing Wrap  
**Each**  
Compare to ResMed  
Tubing Wrap

- 6ft nylon wrap with fleece lining maximizes heat retention and reduces noise
- Zipper closure for ease of use

**Both Tubing Wraps come in attractive retail packaging**

# REMZZZS CPAP MASK LINERS

## RemZzzs CPAP Mask Liners

Item#  
**CAP3001(S,M,L)**  
Liners for Full Face  
ResMed & Respironics

OEM#	K1-FS	SMALL
	K2-FM	MEDIUM
	K3-FL	LARGE

**CAP3002(S,M,L)**  
Liners for Full Face Fisher & Paykel, Hans Rudolph, and Sunset HCS

OEM#	K4-FS	SMALL
	K5-FM	MEDIUM
	K6-FL	LARGE

**CAP3003(S,M,L)**  
Liners for Nasal  
Respironics

OEM#	K7-NS	SMALL
	K8-NM	MEDIUM
	K9-NL	LARGE

**CAP3004(S,M,L)**  
Liners for Nasal ResMed  
and Fisher & Paykel

OEM#	K10-NS	SMALL
	K11-NM	MEDIUM
	K12-NL	LARGE

**CAP3005L**  
Liners for Respironics  
FitLife Mask

OEM#	6A-FLK	SMALL AND LARGE
	6B-FLK	EXTRA LARGE

**CAP3006**  
Liners for Nasal Pillows  
OEM# 7A-NPK

**CAP3007**  
Liners for Respironics Dreamweaver  
and Amara View  
OEM# 6C-AVK



- Increases compliance by adding a comfortable and absorbent pad to CPAP mask
- Reduces air leaks and protects skin from red marks



### 30-Day Supply

Boxes sold individually.  
Full face and nasal mask RemZzzs include 30 facial liners and 2 forehead liners.



# CASH ITEMS

## PAP Pillows

Item# **CAP4003**  
 CPAPMax Pillow  
 Each OEM# 15-501R-1-920



**CPAPMax Replacement Cover**  
**CAP4003RC**  
 Each OEM# 1-630-101-1-933

**Replacement Pillow Case**  
**CAP4003C**  
 Each OEM# 1-626-900-1-02

Item# **CAP4001**  
 CPAP Pillow  
 Each OEM# 14-101R-1-730



**CPAP Pillow Replacement Cover**  
**CAP4001RC**  
 Each OEM# 1-626-100-1-00

**Replacement Pillow Case**  
**CAP4001C**  
 Each OEM# 1-626-800R-1-00



**Cool 3D Mesh Air-Flow**  
 Reduces heat and perspiration



**Fiberfill**  
 Soft microfiber pillow top with hypoallergenic fiberfill

**Ventilated Perforated Foam**  
 Cool air flows through pillow

**Concave Center**  
 Improves airway alignment

**Supportive Edges**  
 Extra support and comfort for side sleepers

**Pressure-Free Side Cutouts**  
 Reduces mask interference

**Ultimate Tube Control**  
 Tube tether allows tube to move with you throughout the night

**Memory Foam**  
 Molds to your facial features

**High Resiliency Foam**  
 Support layer

**Charcoal Infused High Resiliency Foam**  
 Charcoal neutralizes odors for freshness every night

**BEFORE**  
 Traditional pillows interfere with mask performance and can cause a stiff neck, shifting, leaks, and facial discomfort.



**AFTER**  
 The CPAPMax Pillow offers superb mask accommodation, excellent support, and unparalleled comfort.



## CPAP Bedside Storage Bag

Item# **CAP1015**



- Well-made and stylish
- Made to hold CPAP supplies such as a mask and tube
- Weighted lid allows you to hang bag off top of nightstand or tabletop



## CPAP Holder

Item# **CAP1010**



- Sits between mattress and boxspring
- Saves space by allowing your machine to rest in the area between your bed and nightstand
- CPAP machine is kept close to patient's head, allowing more freedom to move throughout the night
- Keeps machine below mask, to help prevent rainout





# CASH ITEMS

## Pur-Sleep CPAP Aromatherapy

Item# **CAP5001**  
VaporClear Aromatherapy Starter Kit  
OEM# VAPOR

**Kit Includes:**

- 1 aluminum diffusion stand
- 4 reusable diffusion pads
- 1 5ml bottle of Clear (peppermint, lime)
- 1 5ml bottle of Calm (eucalyptus, lavender, rosemary)



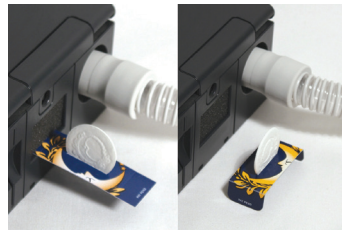
Item# **CAP5002**  
Reusable Diffusion Pads  
**10/pack** • OEM# DP10

Item# **CAP5003**  
Replacement Aluminum Diffusion Tray  
**Each** • OEM# TRAY

**30ml Aromatic Refills**

Scent/OEM#	Item#
Black Cherry	<b>CAP5004-BCH</b>
Calm	<b>CAP5004-CLM</b>
Clear	<b>CAP5004-CLR</b>
Dark Chocolate	<b>CAP5004-DCH</b>
Deep	<b>CAP5004-DEE</b>
French Vanilla	<b>CAP5004-FRV</b>
Fresh	<b>CAP5004-FSH</b>
Peace	<b>CAP5004-PCE</b>
Spice	<b>CAP5004-SPC</b>
Strawberry	<b>CAP5004-STR</b>

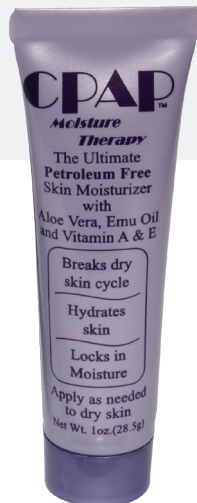
- Aromatherapy products specifically for use with CPAP
- Set up the diffuser right below the CPAP filter intake, add a drop of essential oil to the pad and the fragrance is drawn into the CPAP machine



## CPAP Moisture Therapy

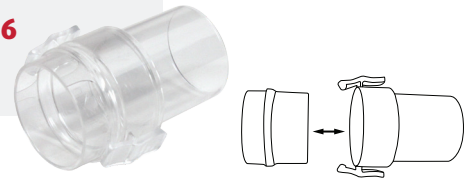
Item# **CAP6100L**  
1oz Tube  
**18/case**

- Prevent chafing, irritation, dryness or cracking from using a CPAP mask or other delivery device
- Apply to the face at the beginning of treatment
- Petroleum-free with Aloe Vera and Vitamins A & E



## Quick Tube Release Connector

Item# **CAP1016**  
**Each**



## CPAP Final Bacteria Filter

Item# **BF2200**  
22mm Bacteria Disk Filter  
**5/pack**



Attach between the machine and tube for additional protection against bacteria and allergens

## Circuit Connectors

Item# **RES013**  
22mm OD x 15mm ID/  
22mm OD  
**10/pack**



Item# **RES014**  
22mm OD x 22mm OD  
With Lip  
**10/pack**



## Humidifier Tubing Adapter

Item# **RES016**  
22mm ID x 22mm OD  
with Lip  
**10/pack**



## Oxygen Bleed-In Adapter

Item# **RES019**  
22mm with 6mm Stem  
**10/pack**



- Barbed rotating stem
- Used for oxygen bleed-in

## Swivel Connector Silencer

Item# **VEN002**  
For CPAP and Ventilator Circuits



# SUNSET CLEANERS

## Cleaning Wipes — Flowpack

Item#  
**CAP1003S**

**12/case**  
(Flowpack of 64 wipes)

- Ingredients are safe and gentle for daily cleaning of all types of CPAP and oxygen masks



## Cleaning Wipes — Sunset Single Packs

Item#  
**CAP1005S**

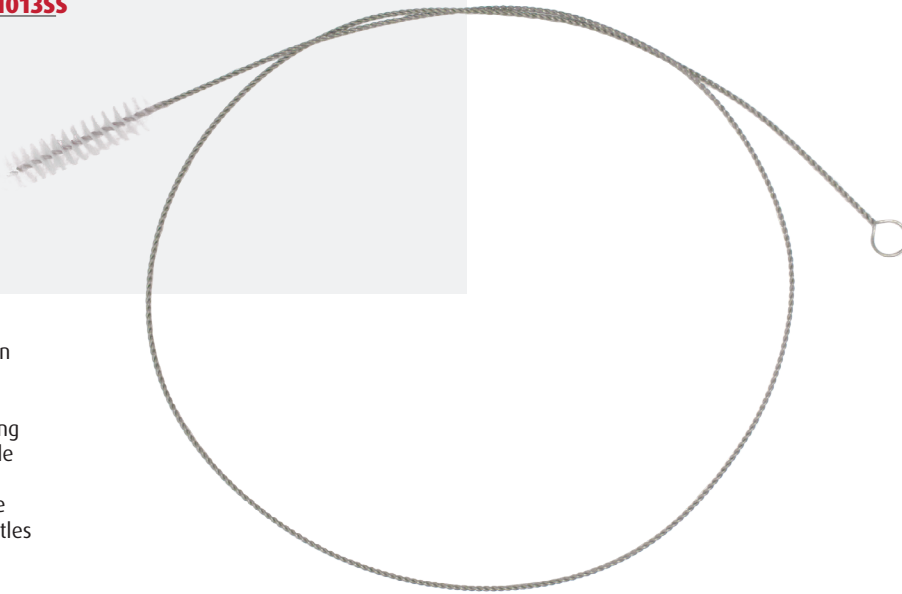
**Each** (Box of 30 single-pack wipes)

- Convenient individually wrapped wipes are great for patient samples or travel use



## CPAP Tube Cleaning Brush

<i>Size</i>	<i>Item#</i>
Standard 6ft	<b>CAP1013</b>
Slim 6ft	<b>CAP1013SS</b>



- 6ft long, so you can brush all the way through a 6ft CPAP tube without leaving debris in the middle
- Stainless steel wire and soft nylon bristles

# CITRUS II CLEANERS

## Mask Cleaning Spray

Item# **CAP1001**  
1.5oz • 24/case

Item# **CAP1002**  
8oz • 12/case

- All-natural cleanser for daily mask cleaning
- Available in 8oz or 1.5oz travel size non-aerosol spray cans



## Cleaning Wipes — Canister

Item# **CAP1003**  
12/case  
(Canister of 62 wipes)



## Concentrate

Item# **CAP1004**  
32oz • Each

- Formulated for weekly cleaning of tubing and accessories
- Mix 4oz of concentrate with 1 gallon of water



## Cleaning Wipes — Citrus II Single Packs

Item# **CAP1005**  
12/case  
(Box of 12 wipes)



Oxygen	Page
Firesafe	24
Masks	25
Pulse Oximeters	25
Cannula	26-27
Tubing	28
Regulators and Conserver	28
Cylinder Carriers	30-31
Connectors and Adapters	32
Accessories and Cleaners	33-34
Bacteria and HEPA Filters	35
Concentrator Cabinet Filters	36-41
Caire/AirSep/Sequal	36
CHAD	36
Covidien Nellcor Puritan Bennett	36
DeVilbiss/Drive	37
Inogen	38
Invacare	38
Nidek	39
Respironics/Healthdyne	40-41

# OXYGEN PRODUCTS

## FIRESAFE

### Firesafe Thermal Shut-Off Valve

Item#  
**RES010**  
Each

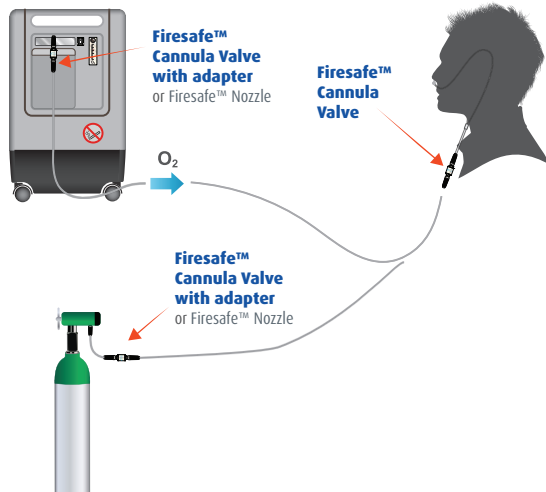
• Bidirectional



**CASH ITEM**



- A thermal fuse designed to stop the flow of gas in the event that the downstream oxygen tubing is ignited
- Helps protect against oxygen tubing fires
- Helps keep patients safe no matter what method of oxygen delivery they use
- Offers a cost-effective solution to lower the risk of serious patient injury in an oxygen fire



### FireSafe Kits

Item#  
**RES010KIT**  
2 Firesafe Valves  
1 Tubing Connector

Item#  
**RES010CANNULAKIT**  
2 Firesafe Valves  
1 Tubing Connector  
1 Adult Soft Cannula



### FireSafe Tubing Connector

Item#  
**RES010TC** 100/case

**RES010TC-10** 10/case



### FireSafe Nozzle

Item#  
**RES010FND-20**  
20/pack



# MASKS

## Simple O<sub>2</sub> Mask



With 7ft Safety Tubing

Item# **RES2100**  
Adult Size  
50/case

Item# **RES2200**  
Pediatric Size  
50/case



HCPCS# A4620

- 5-12 LPM
- Medium concentration
- Clear, soft vinyl for patient comfort
- Adjustable nose clip for secure seal

## Partial Rebreather O<sub>2</sub> Mask



With 7ft Safety Tubing & Reservoir Bag

Item# **RES2101V**  
Adult Size  
50/case

Item# **RES2201V**  
Pediatric Size  
50/case



HCPCS# A4620

- 5-15 LPM
- High concentration

## Non-Rebreather O<sub>2</sub> Mask



With 7ft Safety Tubing & Reservoir Bag

Item# **RES2102**  
Adult Size  
50/case

Item# **RES2202V**  
Pediatric Size  
50/case



HCPCS# A4620

- 10+ LPM
- Low-resistance check valves prevent rebreathing and allow exhaled gas to escape

# PULSE OXIMETERS

## Advanced Finger Pulse Oximeter

Item# **RES5101**  
Each



- 6 display modes
- Dual color OLED display
- SpO<sub>2</sub>, PR, pulse bar and waveform



**CASH ITEM**

## Both Pulse Oximeters

- 2-year warranty
- Adult and pediatric use
- Easy and convenient to operate and carry
- Light and compact
- Ergonomic design
- Low power consumption — automatically powers off
- More than 30 hours of operation on 2 AAA batteries - included



**Both Pulse Oximeters come in attractive retail packaging**

## Standard Finger Pulse Oximeter

Item# **RES5100**  
Each



**CASH ITEM**

- 1 display mode
- Digital LED display
- SpO<sub>2</sub>, PR, and pulse bar





# OXYGEN CANNULA

## Cannula with Tubing

### Adult Cannula with Tubing

Length	Material	Item#	Qty
4ft	Standard	<b>RES1104</b>	<b>50/case</b>
4ft	Soft	<b>RES1104S</b>	<b>50/case</b>
7ft	Standard	<b>RES1107</b>	<b>50/case</b>
7ft	Soft	<b>RES1107S</b>	<b>50/case</b>
15ft	Standard	<b>RES1115</b>	<b>50/case</b>
25ft	Standard	<b>RES1125</b>	<b>25/case</b>
25ft	Soft	<b>RES1125S</b>	<b>25/case</b>

HCPCS# A4615



- Clean, fresh look
- 1-6 LPM
- Curved nasal prongs for added comfort
- 6-channel safety tubing is kink-free
- Soft, lightweight material is memory free for long-term comfort

Item#

**RES1207V**

Pediatric Cannula  
with 7ft Supply Tube  
**50/case**



**RES1307V**

Infant Cannula  
with 7ft Supply Tube  
**50/case**



## High Flow Soft Cannula

Length	Item#	Qty
4ft	<b>RES1104SHF</b>	<b>25/case</b>
7ft	<b>RES1107SHF</b>	<b>25/case</b>
15ft	<b>RES1115SHF</b>	<b>25/case</b>
25ft	<b>RES1125SHF</b>	<b>25/case</b>

HCPCS# A4615



- Now softer
- 6-15 LPM
- Maintain saturation for high-flow patients without a mask
- 6-channel supply tubing for safety

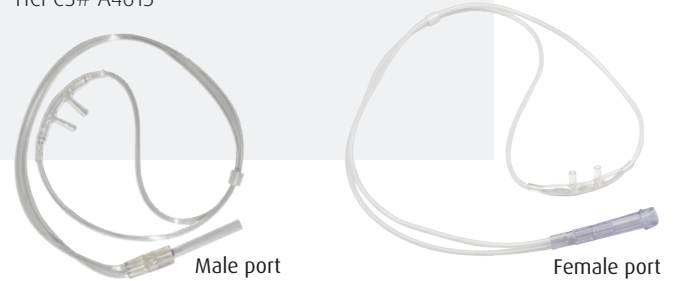


## Cannula without Tubing

### Adult Cannula without Tubing

Port	Material	Item#	Qty
Male	Standard	<b>RES1100</b>	<b>50/case</b>
Male	Soft	<b>RES1100S</b>	<b>50/case</b>
Female	Soft	<b>RES1100FS</b>	<b>50/case</b>

HCPCS# A4615



## Soft Cannula with Universal Connector

Item# **RES1107SUC**

Adult Soft Cannula with  
Universal Connector  
and 7ft Supply Tube  
**50/case**

HCPCS# A4615

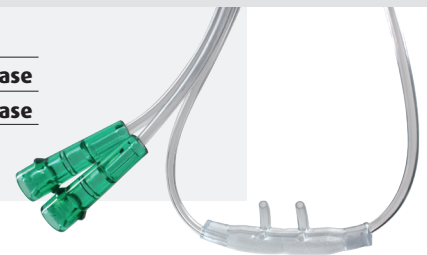


**NEW**

## Dual-Lumen (Demand) Cannula

Length	Item#	Qty
4ft	<b>RES4144V</b>	<b>25/case</b>
7ft	<b>RES4147V</b>	<b>25/case</b>

HCPCS# A4615

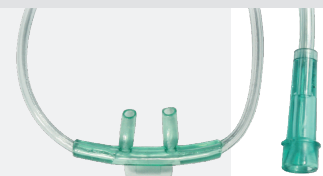


- 1-6 LPM
- Designed for use with dual port oxygen conservation delivery systems
- Dual tubing set provides independent tubes for oxygen delivery and sensing of patient breathing
- Smoothbore tubing

## Tabbed Cannula

Item# **RES1007V**  
Adult Tabbed Cannula  
with 7ft Supply Tube  
**50/case**

HCPCS# A4615

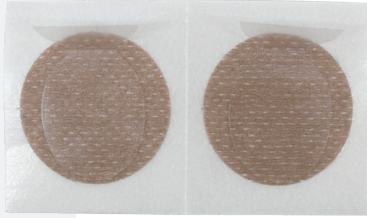




## Secure Cannula Stickers

Item# **RES080**  
25 pairs/case

- Holds cannula in place
- Easy to use
- Flexible, sheer fabric
- Designed to let skin breathe and peel off without leaving residue
- Latex-free
- Individually wrapped pairs



## Comfort Cannula with Ear Cushions

Item# **RES1107EC**  
7ft Cannula with  
Ear Cushions  
25/case  
HCPCS# A4615

- 1-6 LPM
- Soft foam cushions add comfort and increase patient satisfaction
- Cushions are added during the manufacturing process so they stay in place and no assembly is required



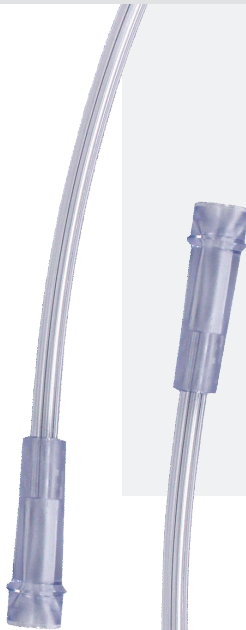
Item# **RES020**  
Cushions Only  
50 Pairs/case

- Add cushions to existing cannula



# OXYGEN TUBING

## Oxygen Supply Tube



Length	Item#	Qty
7ft	<b>RES3007</b>	<b>50/case</b>
15ft	<b>RES3015</b>	<b>50/case</b>
25ft	<b>RES3025</b>	<b>25/case</b>
40ft	<b>RES3040</b>	<b>20/case</b>
50ft	<b>RES3050</b>	<b>20/case</b>

HCPCS# A4616

- New and improved clean, fresh look

## Oxygen Supply Tube — Green



Length	Item#	Qty
7ft	<b>RES3007G</b>	<b>50/case</b>
15ft	<b>RES3015G</b>	<b>50/case</b>
25ft	<b>RES3025G</b>	<b>25/case</b>
40ft	<b>RES3040G</b>	<b>20/case</b>
50ft	<b>RES3050G</b>	<b>20/case</b>

HCPCS# A4616

- Crush resistant with low memory to prevent kinking
- Great durability and comfort level
- Latex-free
- 1-6 LPM
- 6 channels

# OXYGEN REGULATORS AND CONSERVER

## Mini Oxygen Regulator CGA 870 Style



"T" Handle for easy mounting — no tools needed

Barbed hose outlet for easy connection to the oxygen tubing

Item# **RES042**  
Adult • Barbed  
0-8 LPM • **Each**  
0, .5, 1, 1.5, 2, 2.5, 3, 4, 5, 6, 7, 8 LPM

Item# **RES043**  
Adult • Barbed  
0-15 LPM • **Each**  
0, .5, 1, 1.5, 2, 3, 4, 5, 6, 8, 10, 15 LPM



Item# **RES046**  
Pediatric • Barbed  
0-4 LPM • **Each**  
0, <sup>1</sup>/<sub>32</sub>, 1/16, 1/8, 1/4, 1/2, 3/4, 1, 1 1/2, 2, 3, 4 LPM

HCPCS# E1353

For use with E size or smaller cylinders: A, B, C, D, JD, E, M2, M4, M6, ML6, M7, M9, M15, M22, or M24.

## Mini Oxygen Regulator CGA 540 Style



Threaded DISS outlet

Item# **RES044**  
Adult • DISS  
0-8 LPM • **Each**  
0, .5, 1, 1.5, 2, 2.5, 3, 4, 5, 6, 7, 8 LPM

Item# **RES045**  
Adult • DISS  
0-15 LPM • **Each**  
0, .5, 1, 1.5, 2, 3, 4, 5, 6, 8, 10, 15 LPM

### Both Regulators Feature

- Pressure gauge reads to 3000 PSI
- Easy-click flow selector knob
- 2-year warranty



Item# **RES047**  
Pediatric • DISS  
0-4 LPM • **Each**  
0, <sup>1</sup>/<sub>32</sub>, 1/16, 1/8, 1/4, 1/2, 3/4, 1, 1 1/2, 2, 3, 4 LPM

HCPCS# E1353

For use with M60 and larger cylinders: M60, M90, M, MM, M122, M250, H, J, T or other cylinders with CGA 540 style valve.

## Oxygen Regulator CGA 540 Style Long Stem



NEW

Item# **RES045L**  
Adult • DISS  
0-15 LPM • **Each**  
0, .5, 1, 1.5, 2, 3, 4, 5, 6, 8, 10, 15 LPM

## Pneumatic Conserver

Item# **RES040**  
Single Lumen • Barbed Outlet  
**Each**  
Conserve mode: 1, 2, 2.5, 3, 4, 5 LPM  
Continuous mode: 2, 3, 4 LPM



- 5 to 1 conserve ratio compared to regulators
- 3-year warranty
- Made in the USA
- Superior uniform pulse method provides more oxygen when you need it with a uniform pulse with every breath up to 40 breaths per minute, effectively matching dose to patient need
- Easy to read controls and less chance of accidentally switching to continuous flow with knob

# Sample Oxygen Cylinder Specifications\*\*

Use the handy chart below to determine which accessories to purchase for your oxygen cylinder.

\* This information is intended to be used as a guide. Dimensions may vary by manufacturer. Sunset Healthcare Solutions does not sell oxygen tanks.



Older Name		A	B			C	D	JD	E		
<b>Newer Name</b>	M2	M4	M6	ML6	M7	M9	M15	M22	M24	M60	M/MM/M122
<b>Diameter (in.)</b>	2.5	3.2	3.2	4.3	4.3	4.3	4.3	5.3	4.3	7.3	8
<b>Height (in.)</b>	5.3	8.5	11.5	7.6	9.1	11	16.5	16.5	25.5	23	36
<b>Empty Weight (lb)</b>	0.7	1.6	2.2	2.8	3.3	3.7	5.3	8	7.9	22.3	39.5
<b>Capacity (L)</b>	42	113	164	165	198	255	425	640	680	1738	3455
<b>Transport Method</b>	CSBM6, CSBM6BP	CSBM6, CSBM6BP	CSBM6, CSBM6BP, CSBM6Flex, CSBM6-Carrier	CSBML6M7, CSBML6-Handshell	CSBML6M7	CSBM9, CSBM6BP, CSBM6Flex, RES038B	CSBD, CSBDBP, CSBD1Roller, CSBD2Roller, RES038B, RES060		CSBE, CSBD1Roller, CSBD2Roller, RES038B, RES060	Not Portable	Not Portable
<b>Regulator Type</b>	RES042, RES043	RES042, RES043	RES042, RES043	RES042, RES043	RES042, RES043	RES042, RES043	RES042, RES043	RES042, RES043	RES042, RES043	RES044, RES045	RES044, RES045

# CYLINDER BAGS

## Comfort Shoulder Bags

Cylinder	Item#
ML6/M7	<b>CSBML6M7</b>
C/M9	<b>CSBM9</b>
B/M6	<b>CSBM6</b>
D	<b>CSBD</b>

  
CASH ITEM

- Comfort flex shoulder strap
- Double zipper for easy access
- Machine washable



## Flex 02 Bag

Item# **CSBM6Flex**  
Reconfigurable Bag  
for M6 and M9  
Cylinders  
Each

- Adjusts to 5 carrying modes

  
CASH ITEM



## Backpack

Cylinder	Item#
B/M6/C/M9	<b>CSBM6BP</b>
D	<b>CSBDBP</b>

  
CASH ITEM

- Fully adjustable and comfortable backpack straps
- Machine washable
- Converts to either backpack or shoulder bag



## Wheelchair/Scooter Carrier

Item# **CSBE**  
For E Cylinders  
Each

  
CASH ITEM

- Multi-part stabilizer straps for easy chair attachment
- Machine washable





# CYLINDER CARRIERS

## Single Tank Rolling Bag/Backpack

Item#  
**CSBD1Roller**  
For D/E Cylinders  
Each



## Double Tank Rolling/Shoulder Bag

Item#  
**CSBD2Roller**  
For D/E Cylinders  
Each



• May also be used with shoulder strap

## ML6 Hardshell Tote

Item#  
**CSBML6-Hardshell**  
For Homefill Cylinders  
Each



## Cylinder Rack

Item# **RES038B**  
Each  
For D, E, or M9 Cylinders —  
Lightweight, Durable  
Plastic Composite Rack



## Oxygen Cylinder Carrier

Item#  
**CSBM6-Carrier**  
Each  
Soft Polyester Tote  
for M6 Cylinders



- Tote handles
- Padded shoulder strap
- Fastening strap for mobility
- Holds up to 8 M6 tanks

## D/E Cart

Item#  
**RES060**  
4/case

- Accommodates one D or E tank
- Sturdy yet lightweight (4.18 LBS welded metal construction)
- Adjustable height handle with PVC grip
- Large EVA Foam wheels have just the right amount of resilience for good traction and maneuverability
- Elegant, grey satin finish
- Bottom fork rest with rubber caps





# OXYGEN CONNECTORS

## Christmas Tree Connector

Item# **RES001**  
Green without Swivel  
**10/pack**



Item# **RES002**  
Green with Swivel  
**10/pack**



- Tapered and barbed nut and nipple assembly allows secure tubing connections
- For standard DISS threaded oxygen outlets
- Improved threading is easier to connect to regulators or flow meters

## Oxygen Accessory Kit

Item# **RES1000**  
RES002 Christmas Tree Connector - Swivel  
RES012 Tubing Connector - Non-Swivel  
RES017 Tubing Y-Connector  
RES018 Tubing Connector - Swivel  
RES032 Wrench  
RES035 Brass Washer

Each



**CUSTOMIZABLE KIT**



- Order all common oxygen accessories in one easy-to-handle kit
- Contents can be customized to fit your needs

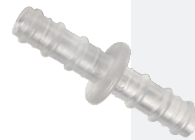
## Oxygen Tubing Y-Connector



Item# **RES017**  
Fits 3/16in and 1/4in ID Tubing  
(All 3 sides are the same)  
**10/pack**

- Connects 2 oxygen sources for higher flows

## Oxygen Tubing Connector — Non-Swivel



Item# **RES012**  
Fits 3/16in and 1/4in ID Tubing  
**10/pack**

- Barbed ends ensure secure, leak-free connections

## Tubing Reducer Connector



Item# **RES011**  
Fits 3/16in, 1/4in, 5/16in, 3/8in, and 7/16in ID Tubing  
**10/pack**

- Tapered on both ends to connect multiple sizes of tubing, works with suction, oxygen, and catheter tubing

## Oxygen Tubing Connector — Swivel



Item# **RES018**  
**10/pack**

- Enhance patient mobility and comfort by minimizing twisting and tangling of oxygen supply tubing

## Oxygen Tubing Connector — Swivel, Female



Item# **RES018KIT-1**  
Each

# OXYGEN ACCESSORIES

## O<sub>2</sub> Starter Kit

### Item# **RES02KIT**

- RES1107 Cannula with 7ft Tube x2
- RES3015 15ft Supply Tube x2
- RES002 Christmas Tree Connector — Swivel
- RES003 Oxygen In Use Sign
- RES012 Tubing Connector — Non-Swivel
- RES017 Tubing Y-Connector
- RES018 Tubing Connector — Swivel
- RES032 Wrench
- RES035 Brass Washer



**CUSTOMIZABLE KIT**

## Washers with Rubber Ring

### Item# **RES035**

Brass  
**25/pack**



### Item# **RES036**

Aluminum  
**25/pack**



## Wrenches

### Item# **RES031**

With Chain **10/pack**

### Item# **RES032**

Without Chain **10/pack**



- For use with post valve oxygen cylinders: A, B, C, D, JD or E tanks
- Made of tough, stress-resistant nylon

### Item# **RES031M**

Metal Wrench with Chain for Post Valve Oxygen Cylinders and CGA 540 Style Regulators  
**5/pack**



## Oxygen In Use Signs

### Item# **RES003**

6in x 9in  
Double Sided  
(English and Spanish)  
With String  
**50/pack**



## Disposable Bubble Humidifiers

### Item#

### **RES050**

6 PSI • 2-12 LPM • 500ml

**20/case**

HCPCS# E0560

OEM# 3260



### Item#

### **RES051**

4 PSI • 2-12 LPM • 500ml

**50/case**

HCPCS# E0560

OEM# 3230

- Preset audible alarm at max PSI pressure relief
- Allows for use of longer lengths of oxygen tubing without the alarm sounding
- Defined maximum and minimum water level lines
- Unique diffuser designed to provide patient with comfortable, therapeutic humidity and minimal noise
- Recessed nipple reduces possibility of breaking off outlet connection

## Humidifier Connectors

### Item# **HUM008**

L-Connector 12in • **10/pk**

### Item# **HUM008L**

L-Connector 21in • **10/pk**

### Item# **HUM008S**

Straight Connector 12in • **10/pk**



- Attach a humidifier to most continuous flow oxygen concentrators

## Water Trap

### Item# **RES037**

Each



- Keeps water out of cannula
- Connects between cannula and supply tubing
- Removable end caps allow you to drain accumulated water
- 9cc water capacity in horizontal position
- Connectors are designed to withstand a pressure of 10 PSI max

# ACCESSORIES AND CLEANERS

## Homefill Tubing Connector

Item# **RES039**  
10/pack

- Compatible with Invacare, Drive, and Respiration homefill machines
- Durable, coiled tubing



## Homefill Racks

Item# **RES039-RACKB**  
For Invacare Perfecto2  
4/case



**RES039-RACKW**  
For Invacare Platinum  
4/case



**RES039-RACKD**  
For DeVilbiss 525/1025 Series  
4/case



Easily attaches onto concentrator and is designed to conveniently hold Homefill and transfill oxygen systems.

## Oxygen Liter Meter

Item# **RES034**  
0-10 Liter/Minute  
Each



- Oxygen pen
- Works with tanks and concentrators

## Germicidal Deodorizing Cleaner

Item# **RES6100**  
12/case  
22oz spray bottles



**CASH ITEM**

- Heavy duty cleaner contains no bleach, alcohol, or phenols
- An effective bactericide, virucide, and fungicide
- Formulated to disinfect hard, non-porous surfaces

## Germicidal Deodorizing Wipes

Item# **RES6101**  
6/case  
(Dispensers of 125 wipes)



**CASH ITEM**

- Cleans, disinfects, and deodorizes hard, non-porous surfaces
- Fresh citrus scent
- Kills 99.9% of bacteria

## Germicidal Deodorizing Cleaner — Gallon

Item# **RES6102**  
1 Gallon



**CASH ITEM**

- No-scrub, hospital strength germicidal cleaner
- Cleans, deodorizes, and disinfects surfaces, equipment and non-critical instruments

## Moisture Therapy

Item# **CAP6100L**  
1oz Tube • 18/cas



**CASH ITEM**

- Apply before beginning oxygen therapy and as needed during treatment
- Moisturize the nose, lip, and over the ear where friction may cause discomfort from the oxygen cannula
- Petroleum-free with aloe vera and vitamins A and E



# BACTERIA AND HEPA FILTERS

## 6in HEPA Capsule with Removable Sticker

Item# **BFH6S**  
Threaded  
Each



## Final Bacteria Filter

Item# **BF516**  
**10/pack**  
5/16in Barbed  
on Both Sides



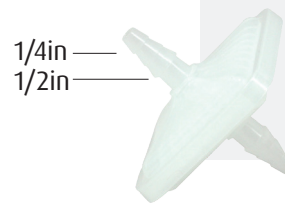
## EverFlo Intake Filter

Item# **BF1001**  
Each



## Final Bacteria Filter — 1/4in to 1/2in

Item# **BF1412**  
**10/pack**  
1/4in to 1/2in Stepped  
Barb on Both Sides



## Extended Life Bacteria Filter

Item# **BF5000**  
Nonthreaded  
Each



## Final Bacteria Filter — 1/4in to 3/8in

Item# **BF1438**  
**10/pack**  
1/4in to 3/8in  
Stepped Barb  
on Both Sides



## Intake Bacteria Filter

Item# **BF2222**  
22mm fittings  
**5/pack**



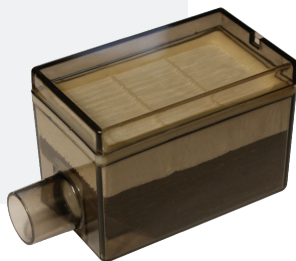
## Final Bacteria Filter — 3/16in

Item# **BF316**  
**10/pack**  
3/16in Barbed  
on Both Sides



## Extended Life Bacteria Filter with Muffler

Item# **OF6011**  
Each



# CAIRE/AIRSEP/SEQUAL

## AirSep Newlife, QuietLife, Intensity



Item# **OF8002**  
Foam Cabinet Filter  
**10/pack**  
5 1/4" x 4 7/8" x 7/8"  
OEM# F1-50-08-05



Item# **BF1438**  
Final Bacteria Filter  
1/4in to 3/8in  
Barbed  
**10/pack**  
OEM# F1-30-03



Item# **OF8001**  
Felt Filter  
**10/pack**  
1 7/8" OD x 3/4" ID x 1"  
OEM# M1 161-1



Item# **OF8002SP**  
Newlife Kit  
2 - OF8002  
1 - BF1438  
1 - OF8001  
Each

## SeQual Integra



Item# **OF11005**  
Foam Cabinet Filter  
**10/pack**  
7 5/8" x 3 5/8" - 5 x 3/4"  
OEM# 2185



Item# **OF11005SP**  
SeQual Kit  
2 - OF11005  
1 - BF5000  
1 - BF516  
Each

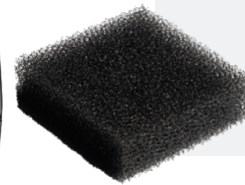
Item# **BF5000**  
Extended Life  
Bacteria Filter  
**Each**  
OEM# 2033



Item# **BF516**  
Final Bacteria Filter  
5/16in Barbed  
**10/pack**



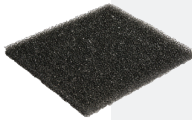
## SeQual Eclipse



Item# **OF11006**  
Foam Cabinet Filter  
**10/pack**  
2 1/2" x 2 1/2" x 3/4"

# CHAD

## Total O<sub>2</sub>



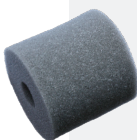
Item# **OF11007**  
Foam Cabinet Filter  
**10/pack**  
4 3/8" x 4" x 3/4"



Item# **BF2222**  
Intake Bacteria Filter  
22mm fittings  
**5/pack**



Item# **OF11007SP**  
CHAD Kit  
2 - OF11007  
1 - BF2222  
1 - OF3003  
Each



Item# **OF3003**  
Foam Intake Filter  
for use with BF2222  
**10/pack**  
2 5/8" OD x 3/4" ID x 2 3/8"  
OEM# H613

# COVIDIEN NELLCOR PURITAN BENNETT

## 590 and 592A



Item# **OF6001**  
Foam Cabinet Filter  
**10/pack**  
6 3/4" x 4 1/4" x 3/8"  
OEM# 492672



Item# **BF5000**  
Extended Life  
Bacteria Filter  
**Each**



Item# **OF6001SP**  
590 and 592 Kit  
2 - OF6001  
1 - BF5000  
1 - BF316  
Each



Item# **BF316**  
Final Bacteria Filter  
3/16in Barbed  
**10/pack**  
OEM# 492141



# DEVILBISS/DRIVE

## SolAiris III, 303 Series



Item#  
**OF5004SP**  
SolAiris III Kit  
2 - OF5004  
1 - BF1438  
1 - BF5000  
Each



Item# **OF5004**  
Foam Cabinet Filter  
**10/pack**  
33/4" x 33/4" x 1/2"  
OEM# 30302605



Item# **BF1438**  
Final Bacteria Filter  
1/4in to 3/8in Barbed  
**10/pack**  
OEM# MC29D-651

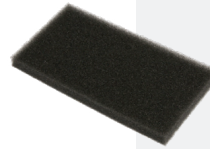


Item# **BF5000**  
Extended Life  
Bacteria Filter  
**Each**

## All MC Units



Item#  
**OF5001SP**  
MC Kit  
2 - OF5001  
1 - BF5000  
1 - BF1438  
Each



Item# **OF5001**  
Foam Cabinet Filter  
**10/pack**  
61/8" x 31/2" x 1/4"  
OEM# 444-514



Item# **BF5000**  
Extended Life  
Bacteria Filter  
**Each**



Item# **BF1438**  
Final Bacteria Filter  
1/4in to 3/8in Barbed  
**10/pack**  
OEM# MC29D-651

## SolAiris V, 505, 515 Series



Item#  
**OF5005SP**  
SolAiris V Kit  
2 - OF5005  
1 - BF6011  
1 - BF1438  
Each



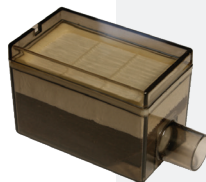
Item# **OF5005**  
Foam Cabinet Filter  
**10/pack**  
51/2" x 35/8" x 5/8"  
OEM# 50502694



Item# **BF1438**  
Final Bacteria Filter  
1/4in to 3/8in  
Barbed  
**10/pack**  
OEM# MC29D-651



Item# **BF5000**  
Extended Life  
Bacteria Filter  
**Each**



Item# **OF6011**  
Extended Life  
Bacteria Filter  
22mm fittings  
**Each**  
Use if manufactured  
before Nov '03

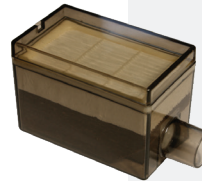
## 525 DS Series



Item# **OF5004**  
Foam Cabinet Filter  
**10/pack**  
33/4" x 33/4" x 1/2"  
OEM# 303DZ-605



Item# **BF1438**  
Final Bacteria Filter  
1/4in to 3/8in Barbed  
**10/pack**  
OEM# MC29D-651



Item# **OF6011**  
Extended Life Bacteria  
Filter — 22mm fittings  
**Each**

## 1025 Series



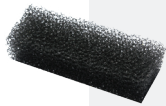
Item# **OF5004**  
Foam Cabinet Filter  
**10/pack**  
33/4" x 33/4" x 1/2"  
OEM# 303DZ-605



Item# **BF1438**  
Final Bacteria Filter  
1/4in to 3/8in Barbed  
**10/pack**  
OEM# MC29D-651

# INOGEN

One



Item# **OF11008**  
Foam Cabinet Filter  
**10/pack**  
2 1/4" x 3/4" x 1/2"  
OEM# RP-100

# INVACARE

Mobilaire 3 and 5, IRC 3 and 5



Item# **OF9001**  
Foam Cabinet Filter  
**10/pack**  
6 3/4" x 3 3/8" x 1/2"  
OEM# 2000489



Item# **BFH6S**  
HEPA Filter  
6in Capsule  
**Each**  
OEM# 2000806



Item# **BF516**  
Final Bacteria Filter  
5/16in Barbed  
**10/pack**  
OEM# P0750X030

Item# **OF9001SP**  
Mobilaire Kit  
2 - OF9001  
1 - BFH6S  
1 - BF516  
Each



KIT

Platinum 5 and 10



Item# **OF9002**  
Foam Cabinet Filter  
**10/pack**  
9" x 2 7/8" x 1/2"  
OEM#1107412



Item# **OF9002SP**  
Platinum Kit  
2 - OF9002  
1 - BFH6S  
1 - BF516  
Each

Item# **BFH6S**  
HEPA Filter 6in  
Capsule with Sticker  
**Each**  
OEM# 2000806

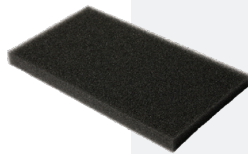


Item# **BF516**  
Final Bacteria Filter  
5/16in Barbed  
**10/pack**  
OEM# P0750X030



KIT

Perfecto2



Item# **OF9004**  
Foam Cabinet Filter  
**10/pack**  
6 7/8" x 3 3/4" x 1/2"  
OEM# 1143492



Item# **BFH6S**  
HEPA Filter  
6in Capsule  
**Each**  
OEM# 2000806



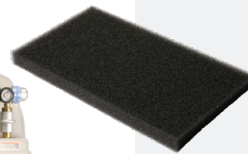
Item# **BF516**  
Final Bacteria Filter  
5/16in Barbed  
**10/pack**  
OEM# P0750X030

Item# **OF9004SP**  
Perfecto2 Kit  
2 - OF9004  
1 - BFH6S  
1 - BF516  
Each



KIT

HomeFill



Item# **OF9003**  
Foam Cabinet Filter  
**10/pack**  
6 3/4" x 3 1/4" x 1/2"  
OEM# F200489

# NIDEK

## Nuvo



Item# **OF11003SP**  
Nuvo Kit  
2 - OF11003  
1 - BF1438  
1 - BF5000  
Each



**KIT**



Item# **OF11003**  
Foam Cabinet Filter  
**10/pack**  
9 1/2" x 4" x 1/4"  
OEM# 9250-1025



Item# **BF1438**  
Final Bacteria Filter  
1/4in to 3/8in Barbed  
**10/pack**  
OEM# 7631-1053



Item# **BF5000**  
Extended Life  
Bacteria Filter  
**Each**  
OEM# 9250-1028

## Mark IV, V, V+



Item# **OF11004SP**  
Mark Kit  
2 - OF11004  
1 - BF1438



**KIT**



Item# **OF11004**  
Foam Cabinet Filter  
**10/pack**  
10" x 4" x 1/2"  
OEM# 9007-6G37



Item# **BF1438**  
Final Bacteria Filter  
1/4in to 3/8in Barbed  
**10/pack**  
OEM# 7631-1053

# RESPIRONICS/HEALTHDYNE

## EverGo



Item# **OF1005**  
Foam Cabinet Filter  
**10/pack**  
23/16" x 11/16" x 3/8"  
OEM# 900-150

Item# **OF1005SP**  
EverGo Kit  
2 - OF1005  
1 - BF316  
Each

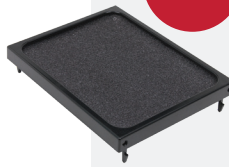


Item# **BF316**  
Final Bacteria Filter  
3/16in Barbed  
**10/pack**  
OEM# H621



KIT

## EverFlo



Item# **OF1006SP**  
EverFlo Cabinet  
Filter Kit (No Cover)  
**2 Cabinet Filters,**  
**1 Casing**  
OEM# 1055625

Item# **OF1003SP**  
EverFlo Kit  
1 - BF1001  
1 - BF316  
Each



Item# **OF1006**  
Cabinet Filter  
**10/pk**  
51/16" x 41/2" x 7/16"



Item# **OF1006-CASE**  
Foam Cabinet Filter  
Casing  
**10/pack**



KIT

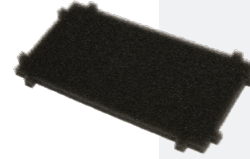


Item# **BF1001**  
EverFlo Intake Filter  
**Each**  
OEM# 1038831



Item# **BF316**  
Final Bacteria Filter  
3/16in Barbed  
**10/pack**  
OEM# H621

## Millennium



Item# **OF1001**  
Foam Cabinet Filter  
**10/pack**  
81/4" x 4" x 3/8"  
(3/16" notches)  
OEM# H619

Item# **OF1001SP**  
Millennium Kit  
2 - OF1001  
1 - BF2222  
1 - OF3003  
1 - BF316  
Each



Item# **BF2222**  
Intake Bacteria Filter  
22mm fittings  
**5/pack**  
OEM# H620



Item# **OF3003**  
Foam Intake Filter  
for use with BF2222  
**10/pack**  
25/8" OD x 3/4" ID  
x 23/8"  
OEM# H618



KIT



Item# **BF316**  
Final Bacteria Filter  
3/16in Barbed  
**10/pack**  
OEM# H621



Item# **OF1002**  
Felt Filter  
**6/pack**

# RESPIRONICS/HEALTHDYNE

## Alliance



Item# **OF3002**  
Foam Cabinet Filter  
**10/pack**  
8<sup>1</sup>/<sub>4</sub>" x 3<sup>3</sup>/<sub>4</sub>" x 1<sup>1</sup>/<sub>2</sub>"  
OEM# 100-0078-10

Item#  
**OF3002SP**

Alliance Kit

2 - OF3002  
1 - BF2222  
1 - OF3003  
1 - BF316  
Each



**KIT**



Item# **BF2222**  
Intake Bacteria Filter  
22mm fittings  
**5/pack**  
OEM# 100-6631-00



Item# **OF3003**  
Foam Intake Filter  
for use with BF2222  
**10/pack**  
2<sup>5</sup>/<sub>8</sub>" OD x 3<sup>3</sup>/<sub>4</sub>" ID  
x 2<sup>3</sup>/<sub>8</sub>"  
OEM# H618



Item# **BF316**  
Final Bacteria Filter  
3/16in Barbed  
**10/pack**  
OEM# H621



**Other**

**Page**

Aerosol	42-43
Nebulizers, Kits, and Filters	44-45
Suction	46-47
Tracheostomy	48-49
Ventilator Supplies	50
Anesthesia Filters	50
Wheelchair Cushions	51

**OTHER**

**SperaChamber**

Anti-Static Valved Inhaler Chamber for Metered Dose Inhaler  
**Each**



Item#  
**RES095**  
 Chamber Only

**RES095MP**  
 Chamber with Pediatric Mask Kit  
 (3-6 Years)



- Inhalation valve
- Universal adapter
- Spiral vents
- Seal with exhalation safety valve
- Latex-free and DEHP-free
- Dog mask appeals to kids



# AEROSOL

## Aerosol Mask

Item# **RES2110**  
Adult Size  
50/case

Item# **RES2210**  
Pediatric Size  
50/case

HCPCS# A7015

- Clear, soft vinyl for patient comfort
- Adjustable nose clip for secure seal
- Connector accepts 22mm aerosol tubing
- Individually packaged



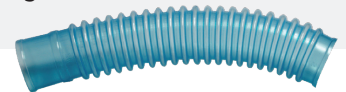
## Aerosol Tube

Item# **TUB100-6**  
Corrugated Aerosol Tubing  
100ft in 6in segments



## Aerosol Tube — Blue

Item# **TUB100-6B**  
Corrugated Aerosol Tubing — Blue  
100ft in 6in segments



## Drainage Bag with T-Adapter

Item# **RES070**  
750cc • 50/case



- Designed to ensure patients receive mist rather than liquid accumulated in the tubing
- Includes hanger and bottom drainage port
- Works with 22mm corrugated aerosol tubing

## Drainage Bag with Y-Adapter

Item# **RES071**  
750cc • 50/case



## Peak Flow Meter

Item# **RES052**  
12/case



- Meets all NAEP and NHLBI standards
- Universal 50 to 720 LPM range is convenient, compact, and easy to use for adult/child/adolescent patient population
- Durable, sliding zone indicators encourage patient compliance
- Ergonomically designed plastic housing and tempered stainless steel vane are dishwasher safe
- Reusable plastic mouthpiece attaches to unit for secure storage

## Large Volume Non-Prefilled Nebulizer

Item# **RES094**  
10/case



- Delivers humidified gas in concentrations ranging from 28% to 98%
- Lightweight, easy to use construction
- Bright yellow, Venturi-style entrainment ring with incremental dial for setting oxygen concentrations
- Polypropylene jar holding up to 500cc of water
- Clearly marked water levels



# MINI MESH NEBULIZER

## Mini Mesh Nebulizer

Item#  
**NEB400**

**NEW**

**Included**

USB cord  
Medicine cup  
Mouthpiece  
Adult mask  
Pediatric mask  
Carrying bag

- Runs on USB or 2 AA batteries
- Quiet
- Fast treatment times
- Small particle size
- Attainable for more patients



### Replacement Parts

<b>NEB400CUP</b>	Medication Cup
<b>NEB400MP</b>	Mouthpiece
<b>NEB400MASKP</b>	Pediatric Mask
<b>NEB400MASKA</b>	Adult Mask

# COMPRESSOR NEBULIZER

## Handheld Compressor Nebulizer

Item#  
**NEB200**

**Included**

Compressor  
Medication cup  
AC power adapter  
Air hose  
Elbow  
Mouthpiece  
Mask  
4 AA batteries

- Runs on 4 AA batteries or AC power adapter
- Portable (small and weighs only 1/2 pound)
- Quiet (60dBA)
- Fine particle size (Approximately 3 microns)
- No replacement filter required

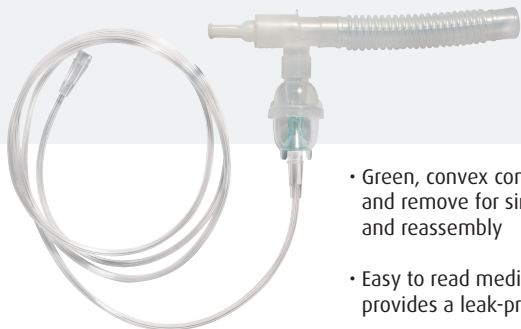


# NEBULIZER KITS AND FILTERS

## Disposable Nebulizer Kit with T-Piece

Item# **RES091**  
 Disposable  
 Single Patient  
**50/case**  
 HCPCS# A7003

- Includes:
- 6cc jet nebulizer bottle
  - T-piece with mouthpiece and corrugated reservoir tube
  - 7ft supply tube

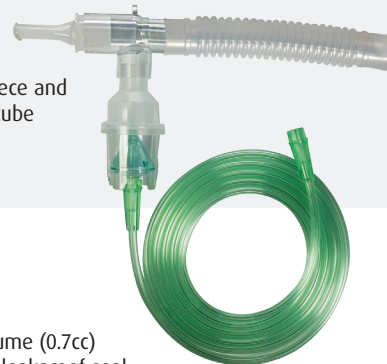


- Green, convex cone is easy to see and remove for simple cleaning and reassembly
- Easy to read medication jar provides a leak-proof seal

## Reusable Nebulizer Kit with T-Piece

Item# **RES093**  
 Reusable — Single Patient  
**10/case**  
 HCPCS# A7005

- Includes:
- Jet nebulizer bottle
  - T-piece with mouthpiece and corrugated reservoir tube
  - 7ft supply tube



- Latex-free
- Dishwasher safe
- High capacity (10cc)
- CC volume markings
- Very low residual volume (0.7cc)
- 1/4 turn cap provides leakproof seal
- Works upright or at angles up to 45°

## Disposable Nebulizer Kit with Mask

Item# **RES090**  
 Adult Size • **50/case**

Item# **RES092**  
 Pediatric Size • **50/case**

HCPCS# A7003



- Includes:
- 6cc jet nebulizer bottle
  - T-piece with mouthpiece and corrugated reservoir tube
  - 7ft supply tube
- Disposable single patient use for long term delivery procedures
  - 6cc bottle is easy to assemble and disassemble

## Plastic Intake Filter

Item# **BF015**  
**10/pack**  
 HCPCS# A7013



## Plastic Intake Filter with Head

Item# **BF016**  
**10/pack**  
 HCPCS# A7013

## Plastic Intake Filter with Head

Item# **BF017**  
**5/pack**  
 HCPCS# A7013



## Foam Filter

Item# **BF018**  
**10/pack**  
 HCPCS# A7013



## Plastic Intake Filter for Respironics InnoSpire

Item# **BF026S**  
**10/pack**  
 HCPCS# A7013



- Mini
- MicroElite
- MiniElite

## Nebulizer Filter Compatibility

Caire	
Medi-Mist	BF018

MedLine	
SportsMist	BF018

DeVilbiss	
PulmoNeb	BF017
PulmoNeb LT	BF017
Sunrise Compact	BF018
Pulmo-Aide	BF017
Pulmo-Aide Compact	BF017
PulmoMate	BF017

Respironics	
Inspiration 323	BF015
Inspiration 626 & 929	BF016
MisterNeb	BF016
Inspiration Elite	BF016
MiniElite	BF018
InnoSpire	BF026S

Evo	
AeroMax	BF018
SportsNeb	BF018
Super SportsNeb	BF018

Salter	
AIRE Plus	BF018

Invacare	
Passport	BF018
Envoy	BF018
Envoy Jr.	BF018
Select	BF018

Schuco	
2000	BF018
3000	BF018

John Bunn	
Nebulite EV	BF018
LT2	BF018
LX	BF018

Sunset	
NEB100 Series	BF018
NEB300 Series	BF018

# SUCTION

## AC/DC Portable Suction Machine

Item#  
**SU100DC**

**NEW**

### Comes with

Machine  
AC Adapter and Power Cord  
Carrying Bag  
800cc Suction Canister  
1.5in Suction Tube Connector  
10in Suction Tube Connector  
6ft Suction Tubing  
Bacteria Filter

- Effective removal of respiratory fluids
- Durable, portable system
- Variable vacuum control
- Quiet and easy to use
- Lightweight AC or DC operation
- Rechargeable lithium battery
- Carrying case
- Two-year warranty



### Accessories and replacement parts

**SU100DC-Adapt** Replacement Power Adapter (without cord)

**SU100DC-Cord** Replacement Power Cord (without adapter)

**SU100DC-BAG** Carrying/Storage Bag

**SU100-PA** Car Charger (DC Mobile Power Adapter)

## Suction Kit for SU100DC

Item# **RES026S-SS**

RES023S Suction Canister  
RES024S Suction Tubing Connector 1.5in  
RES024L10 Suction Tubing Connector 10in  
BF1312 Bacteria Filter  
RES025 Suction Tubing 1/4in x 6ft

HCPCS#  
CANISTER - A7000  
TUBING - A7002



## Suction Filter Component Kit for SU100DC

Item# **RES024S-KIT**

RES024S Suction Tubing Connector 1.5in  
RES024L10 Suction Tubing Connector 10in  
BF1312 Bacteria Filter



## Suction Canister

Item#  
**RES023S**

800cc • Single Use  
**10/case**

HCPCS# A7000

- Float shut off valve for protection against overflow and premature shut-off
- Leak-free seal to minimize vacuum loss



## Suction Kit

Item# **RES026S-E**

RES023S Suction Canister  
RES024M Suction Tubing Connector 4.5in  
RES025 Suction Tubing 6ft  
RES028 Elbow Connector  
BF3812 Bacteria Filter

HCPCS#  
CANISTER - A7000  
TUBING - A7002



**CUSTOMIZABLE KIT**



## Suction Machine Inline Filters

Item# **BF1312**  
1/3in to 1/2in  
**10/pack**



Item# **BF3812**  
3/8in to 1/2in  
**10/pack**



Item# **BF516TS**  
5/16in Barbed with Threaded NPT  
**10/pack**



**NEW**



# SUCTION

## Suction Tubing

### 1/4in

Length	Item#	Qty
18in	<b>RES025S</b>	<b>50/case</b>
6ft	<b>RES025</b>	<b>10/case</b>

### 3/16in

Length	Item#	Qty
18in	<b>RES025-31618</b>	<b>100/case</b>
20in	<b>RES025-31620</b>	<b>100/case</b>
6ft	<b>RES025-31672</b>	<b>50/case</b>



HPCPS# A7002



## Suction Catheters

### 50/case

Size	Valve Type	Tip	Item#
8fr	Y	DeLee	<b>TRASC108S</b>
8fr	Chimney	DeLee	<b>TRASC108SCV</b>
10fr	Y	Whistle	<b>TRASC110S</b>
10fr	Chimney	Whistle	<b>TRASC110SCV</b>
12fr	Y	Whistle	<b>TRASC112S</b>
12fr	Chimney	Whistle	<b>TRASC112SCV</b>
14fr	Y	Whistle	<b>TRASC114S</b>
14fr	Chimney	Whistle	<b>TRASC114SCV</b>

- Sterile
- Single patient use
- Latex-free



## Rubber Suction Elbow Connector

Item#  
**RES028**  
6/pack



## Bulb Tip Yankauers

Item# **TRAA001S**  
Vented • **50/case**

Item# **TRAA002S**  
Non-Vented • **50/case**

HPCPS# A4628



- Sterile
- Single patient use
- Not made with natural latex rubber

## Suction Tube Connectors

### 10/pack

Size	Item#
1.5in	<b>RES024S</b>
3.5in	<b>RES024</b>
4.5in	<b>RES024M</b>
6in	<b>RES024L</b>
10in	<b>RES024L10</b>
16in	<b>RES024XL</b>



## Suction Care Kits

**Y-Valve Catheter and Gloves**  
50/case

**Y-Valve Catheter, Gloves and Cup**  
50/case

Size	Item#	Item#
8fr	<b>TRATK108</b>	<b>TRATK208</b>
10fr	<b>TRATK110</b>	<b>TRATK210</b>
12fr	<b>TRATK112</b>	<b>TRATK212</b>
14fr	<b>TRATK114</b>	<b>TRATK214</b>



# TRACHEOSTOMY

## SPIRO Speaking Valve

Item#

**RES027SV-1**

Speaking Valve with O2 Port

**Each**

HCPCS# L8501

- Resistance to Flow <0.8cm H2O @ 30 LPM
- 15 mm Connector

- Improves patient communication
- Improves swallowing
- May decrease risk for aspiration
- Improves secretion management
- Improves smell and taste
- Decreases risk for respiratory infection



**RES027SV-SET**

Speaking Valve Starter Kit

**Each**

- Speaking Valve with Cap
- Humidifier with Cap
- Tweezers



**RES027SV-T**

Tweezers for  
Filter Replacement

**2/pack**



**RES027SVF-100**

Replacement Filters

**100/pack**

HCPCS# A7504



**RES027SV-CAP**

Shower Cap for Speaking Valve

**2/pack**



## Tracheostomy Mask

Item#

**RES2130**

Adult Size

**50/case**

**RES2230**

Pediatric Size

**50/case**

HCPCS# A7525

- Latex-free
- 360° swivel in 2 places allows access from either side of the patient
- Comes with removable adapter to fit with aerosol or O<sub>2</sub> supply tubing



## Tracheostomy Swivel Elbow Connectors

15mm ID x 15mm OD

**10/pack**








Item# **RES021**  
With suction port

Item# **RES022**



# HMEs AND TRACH TIES

## Heat Moisture Exchangers

	 <b>RES027</b> T-HME	 <b>RES0270P</b> T-HME with Oxygen Port	 <b>RES0271L</b> Inline HME — Large Volume	 <b>RES0271LO</b> Inline HME — Large Volume with Oxygen Port	 <b>RES027NE</b> Inline HME — Neonatal
TV Range (mL)	250-1000	250-1000	15-50	15-50	15-50
Moisture Output (mg H2O/L)	27.3, Vt = 0.5L	26, Vt = 0.5L	31, Vt = 0.1L	31.2, Vt = 0.1L	30, Vt = 0.2L
Weight (g)	5	6.5	10	10	5
Resistance (cm H2O)	0.7@60 LPM	0.4@30 LPM	0.4@10 LPM	0.4@10 LPM	0.5@10 LPM
Dead Space (mL)	12.5	12	13	13	2.5
Connection	15F	15mmF, 5.5mm Oxygen port	15M, 22M/15F	15M, 22M/15F	15M, 15F

## Adapter for T-HME

Item#  
**RES027A**  
Each



## Flex HME

Item#  
**RES027FLEX**  
40/case  
Foam  
22mm Male  
15mm Female

**NEW**



TV Range (mL)	300-1500
Moisture Output (mg H2O/L)	33.8 mg/L at Vt = 0.5L
Weight (g)	17
Resistance (cm H2O)	0.50@30 LPM, 1.34@60 LPM
Dead Space (mL)	90

## Tracheostomy Ties with Fastener Tabs

Item#  
**RES029**  
One-piece  
Adult  
20/case

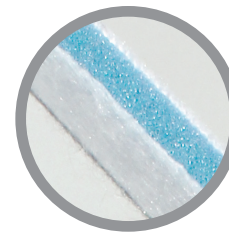
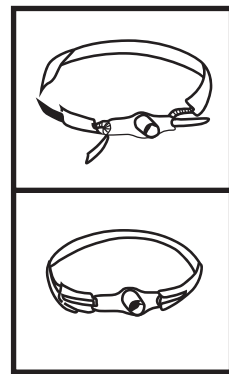
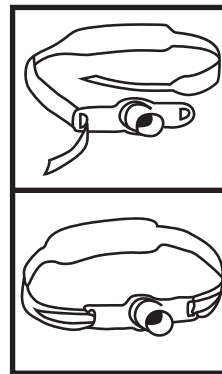
Item#  
**RES029P**  
One-piece  
Pediatric  
20/case

• Easy on

Item#  
**RES030**  
Two-piece  
Adult  
20/case

Item#  
**RES030P**  
Two-piece  
Pediatric  
20/case

• Easy off



• Designed to provide secure stabilization of the tracheostomy tube

• Made from soft foam and cotton

TRACHEOSTOMY

# VENTILATOR SUPPLIES

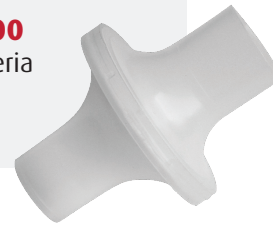
## Ventilator Felt Filter

Item# **VF006**  
 For use with  
 NPB LP6 & LP10  
**10/pack**



## Bacteria Filter

Item# **BF2200**  
 22mm Bacteria  
 Disk Filter  
**5/pack**



## Valved T-Adapter — Adult

Item# **VEN001**  
 22F-18F-22M/15F  
**Each**



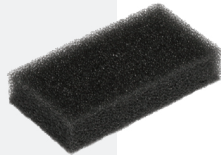
## Swivel Connector Silencer

Item# **VEN002**  
 For Ventilator Circuits  
 and CPAP  
**Each**



## Respironics Trilogy Ventilator Filter

Item# **CF1009F**  
**2/pack**  
 OEM# 1029330



## Circuit Connectors

Item# **RES013**  
 22mm OD  
 15mm ID x 22mm OD  
**10/pack**



Item# **RES014**  
 Aerosol Connector  
 22mm OD x 22mm OD  
 with Lip  
**10/pack**



# ANESTHESIA FILTERS

## Bacterial/Viral HME Filter — Adult

Item# **BF104**  
 15 mm ID x 15 mm ID/  
 22 mm OD  
**Each**  
 HCPCS# A7507



- Bacterial efficiency 99.9999+%
- Viral efficiency 99.99+%
- Gas sampling port
- 35.5mg/L @ 500ml VT

## Bacterial/Viral HME Filter — Pediatric

Item# **BHF204**  
**Each**  
 HCPCS# A7507



- Bacterial efficiency 99.9999+%
- Viral efficiency 99.9+%
- Gas sampling port
- 31mg/L @ 500ml VT

# WHEELCHAIR CUSHIONS

## Foam and Gel Wheelchair Cushions

### Foam 16x3x • Each

Size	Item#
16in	<b>WCF16163</b>
18in	<b>WCF18163</b>
20in	<b>WCF20163</b>

### Gel 16x3x • Each

Size	Item#
16in	<b>WCG16163</b>
18in	<b>WCG18163</b>
20in	<b>WCG20163</b>

HCPCS# E2601

- Supports up to 250 lbs
- Breathable, washable, waterproof cover
- Fire-retardant materials
- Retail packaging is attractive and stackable with easy size and type identification shown on the side



**Foam** is lightweight

**Gel** includes a gel bladder inside the foam for more support

## Lumbar Cushion

Item#

**WCL18**

18in • Each

HCPCS# E2611



High quality memory foam gives Sunset's wheelchair lumbar cushion an added level of comfort. In addition to easing back pain, the lumbar cushion also helps maintain spine alignment. A removable cover makes washing easy and quick.





Catalog 4.0

